



Iowa Department of Transportation

SPECIAL PROVISIONS FOR TEMPORARY PORTABLE RUMBLE STRIPS

Audubon County
HSIPX-071-4(50)--3L-05

Cass County
STPN-092-2(41)--2J-15

Chickasaw County
NHSX-018-7(62)--3H-19

Crawford County
STPN-141-3(65)--2J-24

Decatur County
IMX-035-1(154)0--02-27

Fayette County
NHSX-003-7(43)--3H-33

Lucas County
HSIPX-014-2(36)--3L-59

Marshall County
NHSX-014-5(73)--3H-64

Pottawattamie County
IMX-680-2(159)14--02-78

Shelby County
STPN-191-3(11)--2J-83

Wayne County
STPN-014-1(11)--2J-93

Allamakee County
NHSN-052-4(6)--2R-03

Carroll County
STPN-141-4(28)--2J-14

Cherokee County
NHSX-003-2(69)--3H-18

Clay County
NHSX-071-8(58)--3H-21

Dallas County
NHSX-169-4(63)--3H-25

Dubuque County
STPN-052-2(131)--2J-31

Hardin County
NHSX-065-6(58)--3H-42
STPN-057-1(27)--2J-42

Marion County
HSIPX-014-3(49)--3L-63

Pocahontas County
STPN-004-4(24)--2J-76

Poweshiek County
NHSN-063-4(41)--2R-79

Warren County
NHSN-065-3(45)--2R-91

Winneshiek County
NHSN-052-5(32)--3R-96

Effective Date
February 17, 2015

THE STANDARD SPECIFICATIONS, SERIES 2012, ARE AMENDED BY THE FOLLOWING MODIFICATIONS AND ADDITIONS. THESE ARE SPECIAL PROVISIONS AND SHALL PREVAIL OVER THOSE PUBLISHED IN THE STANDARD SPECIFICATIONS.

120276.01 DESCRIPTION.

Furnish, place, and maintain temporary portable rumble strips at locations specified in the contract documents.

120276.02 MATERIALS.

The RoadQuake, RoadQuake2 or Roadquake2F temporary portable rumble strip, by Plastic Safety Systems (PSS), shall be used at locations specified in the contract documents. Alternate products or methods must be preapproved by the Office of Traffic and Safety.

120276.03 CONSTRUCTION.

A. Placement.

1. A temporary portable rumble strip panel consists of three rumble strips placed transversely to traffic at a range of 8 to 10 foot, center to center, spacing.
2. Place one end of the rumble strip 6 inches from the roadway's centerline. Extend the rumble strip perpendicular to the direction of traffic such that both front tires of a vehicle will contact the rumble strip at the same time. The outside end of the rumble strip shall extend to within 1 foot of the outside edge line.
3. Locations of temporary portable rumble strip panels are designated on Standard Road Plan TC-214(Modified).

B. Maintenance.

If at any time during the work period, the rumble strips become out of alignment (skewed) by more than 6 inches measured from one end to the other, or the rumble strips are no longer in the wheel path of the approaching vehicles, correct the placement to comply with Article ~~120169.03~~ 120276.03, A.

C. Removal.

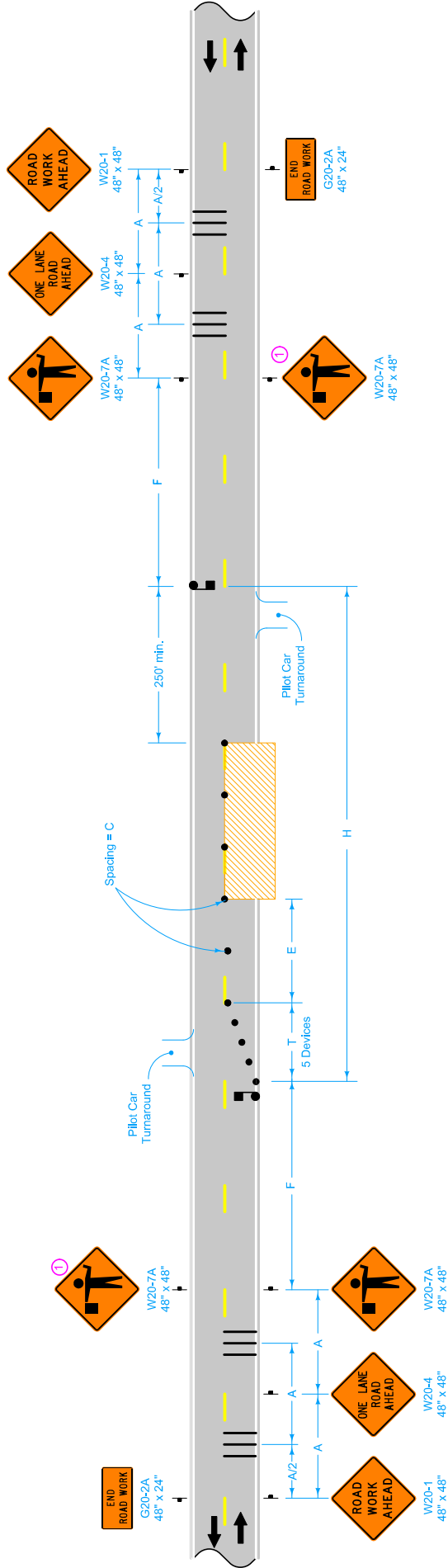
Remove the rumble strips at all times when Standard Road Plan TC-214(Modified) is not in use.

120276.04 METHOD OF MEASUREMENT.

All work associated with the placement, maintenance, and removal of temporary portable rumble strips will not be measured separately but will be included in the Traffic Control bid item.

120276.05 BASIS OF PAYMENT.

Payment for the temporary portable rumble strips will not be made separately, but will be included in the Traffic Control bid item.



Possible Contract Items:
 Flagger
 Pilot Car
 Traffic Control

MODIFIED	5	x
	TC-214	
STANDARD ROAD PLAN		
MODIFICATIONS: Added Portable Rumble Strip Panel.		
LANE CLOSURE WITH FLAGGERS AND RUMBLE STRIPS FOR USE WITH PILOT CAR		

Sign optional for ADT less than 5,000.
 In rural areas, as work activity nears the downstream limits of dimension H, the lane closure may be extended up to 1.0 mile beyond the maximum distance, H, shown in the table. After the traffic control devices have been placed to extend the closure and after work activity has progressed, the advanced signing and devices at the beginning of the traffic control zone should be moved downstream so that the H distance is once again within the limits shown in the table. This one-mile extension will not be allowed during any peak traffic hours listed in the contract documents.

SPEED LIMIT (mph)	ADT	A	C	E	F	H max.	T
35 or less	up to 2,500	250'	40'	0'-200'	500'	2.5 mi.	50'
	2,500 - 5,000	250'	40'	0'-200'	500'	2.0 mi.	50'
40 - 45	more than 5,000	500'	40'	0'-200'	1000'	1.5 mi.	50'
	up to 2,500	350'	80'	0'-200'	700'	2.5 mi.	100'
50 or greater	2,500 - 5,000	350'	80'	0'-200'	700'	2.0 mi.	100'
	more than 5,000	700'	80'	0'-200'	1400'	1.5 mi.	100'
50 or greater	up to 2,500	500'	160'	200'-300'	1000'	2.5 mi.	100'
	2,500 - 5,000	500'	160'	200'-300'	1000'	2.0 mi.	100'
50 or greater	more than 5,000	1000'	160'	200'-300'	2000'	1.5 mi.	100'

LEGEND

- Traffic Sign
- Flagger
- 42" Channelizer
- Work Area
- Direction of Traffic
- Portable Rumble Strip Panel