



**SPECIAL PROVISIONS  
FOR  
TEMPORARY PORTABLE RUMBLE STRIPS**

**Clarke County  
STPN-069-2(24)--2J-20**

**Davis County  
MP-002-5(707)196--76-26  
MP-063-5(712)0--76-26**

**Greene County  
HSIPX-030-3(51)--3L-37**

**Jasper County  
HSIPX-014-4(66)--3L-50**

**Lee County  
MP-061-5(705)0--76-56**

**Poweshiek County  
MP-063-1(709)103--76-79**

**Effective Date  
July 18, 2017**

**THE STANDARD SPECIFICATIONS, SERIES 2015, ARE AMENDED BY THE FOLLOWING MODIFICATIONS AND ADDITIONS. THESE ARE SPECIAL PROVISIONS AND SHALL PREVAIL OVER THOSE PUBLISHED IN THE STANDARD SPECIFICATIONS.**

**150278.01 DESCRIPTION.**

Furnish, place, and maintain temporary portable rumble strips at locations specified in the contract documents.

**150278.02 MATERIALS.**

The RoadQuake, RoadQuake2 or Roadquake2F temporary portable rumble strip, by Plastic Safety Systems (PSS), shall be used at locations specified in the contract documents. Alternate products meeting the following requirements must be preapproved by the Office of Traffic and Safety.

- A.** Rated for posted speed limits up to 70 mph.
- B.** Installation without use of nails or adhesive.
- C.** Provides both auditory and tactile warnings for trucks and passenger vehicles.

- D. Minimal lateral displacement under traffic loading.
- E. Installation and removal of rumble strips in less than 5 minutes.
- F. Reusable within manufacturer's recommended life of the product.

**150278.03 CONSTRUCTION.**

**A. Placement.**

1. A temporary portable rumble strip panel consists of three individual temporary portable rumble strips placed on roadway surface.
2. Place centerline end of temporary portable rumble strip 6 inches from centerline of roadway perpendicularly extending its full length transversely across pavement surface.
3. Place each individual temporary portable rumble strip between 15 to 20 feet apart within the temporary portable rumble strip panel.

**B. Maintenance.**

Ensure temporary portable rumble strips maintain alignment within 6 inches perpendicular to centerline of roadway when measured from one end to the other end of the individual temporary portable rumble strip.

**C. Removal.**

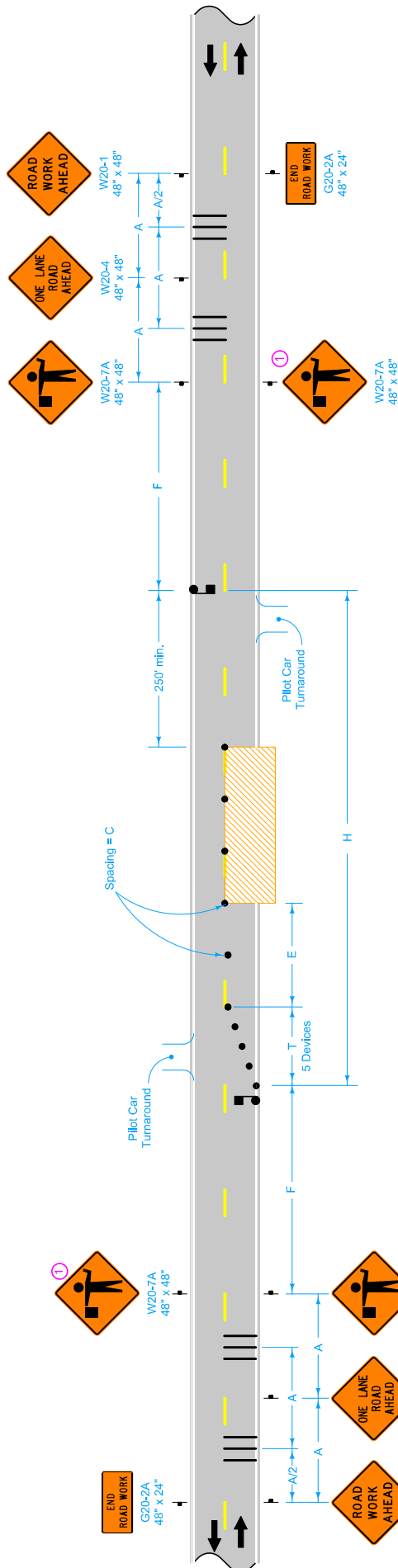
When temporary traffic control requiring temporary portable rumble strips is no longer in operation, remove temporary portable rumble strips from roadway.

**150278.04 METHOD OF MEASUREMENT.**

All work associated with the placement, maintenance, and removal of temporary portable rumble strips will not be measured separately but will be included in the Traffic Control bid item.

**150278.05 BASIS OF PAYMENT.**

Payment for the temporary portable rumble strips will not be made separately, but will be included in the Traffic Control bid item.



Possible Contract Items:  
 Flagger  
 Pilot Car  
 Traffic Control

<b>MODIFIED</b>	5	x
	<b>TC-214</b>	
SHEET 1 of 1		
MODIFICATIONS: Added Portable Rumble Strip Panel.		
<b>LANE CLOSURE WITH FLAGGERS AND RUMBLE STRIPS FOR USE WITH PILOT CAR</b>		

Sign optional for ADT less than 5,000.  
 In rural areas, as work activity nears, the downstream limits of dimension H, the lane closure may be extended up to 1.0 mile beyond the maximum distance, H, shown in the table. After the traffic control devices have been placed to extend the closure and after work activity has progressed, the advanced signing and devices at the beginning of the traffic control zone should be moved downstream so that the H distance is once again within the limits shown in the table. This one-mile extension will not be allowed during any peak traffic hours listed in the contract documents.

SPEED LIMIT (mph)	ADT	A	C	E	F	H max.	T
35 or less	up to 2,500	250'	40'	0'-200'	500'	2.5 mi.	50'
	2,500 - 5,000	250'	40'	0'-200'	500'	2.0 mi.	50'
40 - 45	more than 5,000	500'	40'	0'-200'	1000'	1.5 mi.	50'
	up to 2,500	350'	80'	0'-200'	700'	2.5 mi.	100'
50 or greater	2,500 - 5,000	350'	80'	0'-200'	700'	2.0 mi.	100'
	more than 5,000	700'	80'	0'-200'	1400'	1.5 mi.	100'
50 or greater	up to 2,500	500'	160'	200'-300'	1000'	2.5 mi.	100'
	2,500 - 5,000	500'	160'	200'-300'	1000'	2.0 mi.	100'
50 or greater	more than 5,000	1000'	160'	200'-300'	2000'	1.5 mi.	100'

**LEGEND**

- Traffic Sign
- Flagger
- 42" Channelizer
- Work Area
- Direction of Traffic
- Portable Rumble Strip Panel