



**SPECIAL PROVISIONS
FOR
WORK ON RAILROAD RIGHT-OF-WAY (UNION PACIFIC RAILROAD)**

**Polk County
BROS-SWAP-C077(216)--SE-77**

**Effective Date
Sept. 20, 2022**

THE STANDARD SPECIFICATIONS, SERIES 2015, ARE AMENDED BY THE FOLLOWING MODIFICATIONS AND ADDITIONS. THESE ARE SPECIAL PROVISIONS AND THEY SHALL PREVAIL OVER THOSE PUBLISHED IN THE STANDARD SPECIFICATIONS.

151149.01 DESCRIPTION.

This specification describes the requirements when work is within the Right-of-way (ROW) or properties of the Union Pacific Railroad (Railroad) and adjacent to tracks, wire lines, and other facilities. This specification also describes the coordination with Railroad when work by the Contractor will be performed upon, over, or under the Railroad ROW, or may impact current or future Railroad operations. The Contractor shall coordinate with the Railroad when performing work on Railroad ROW.

The Railroad representative will be the person or persons identified by the Railroad Manager of Industry and Public Projects to handle specific tasks related to the project.

The Railroad Project Representative for this project is:

Melinda Dubay, Manager – Industry & Public Projects
Union Pacific Railroad Company
1400 Douglas Street, MS 0910
Omaha, Nebraska 68179
Office: (402) 544-3992
Email: msdubay@up.com

For Railroad flagging services and track work, contact the following Railroad MTM Representative:

Nicholas V. Harrison
2300 E. Market Street
Des Moines, Iowa 50317
Office: (515) 537-3390
Cell: (319) 464-7450
Email: nvharris@up.com

151149.02 THE RAILROADS SPECIFICATIONS.

The Contractor shall comply with all of the terms and conditions contained in Attachment A: Contractor's Right of Entry Agreement.

151149.03 CONTRACTOR'S RIGHT OF ENTRY AGREEMENT - INSURANCE.

- A. Prior to Contractor performing any Project work within the Crossing Area or on any portion of Railroad's property, and any subsequent maintenance or repair work, the Contractor is required to:
 - i. Execute the Railroad's then current form of Contractor's Right of Entry Agreement ("CROE"), including paying the administrative fee to be estimated at \$1,025;
 - ii. obtain the then current insurance required in the CROE; and
 - iii. provide such insurance policies, certificates, binders and/or endorsements to the Railroad.

- B. The Railroad's current CROE is marked Attachment A, attached hereto and hereby made a part hereof. Under no circumstances will the Contractor be allowed on the Railroad's property without first executing the Railroad's CROE and obtaining the insurance set forth therein and also providing to the Railroad the insurance policies, binders, certificates and/or endorsements described therein.

- C. All insurance correspondence, binders, policies, certificates and/or endorsements shall be sent to:
 - Manager - Contracts
 - Union Pacific Railroad Company
 - Real Estate Department
 - 1400 Douglas Street, Mail Stop 1690
 - Omaha, NE 68179-1690
 - UP File Folder No. 3160-09

151149.04 CONDITIONS TO BE MET BEFORE CONTRACTOR CAN COMMENCE WORK

The Contractor may not commence any work within the Crossing Area or on any other Railroad property until Polk County (County) has required the Contractor to (a) execute Railroad's CROE and obtain and/or provide to the Railroad the insurance policies, certificates, binders, and/or endorsements required under the CROE; (b) provide the advance notice(s) required under the CROE to the Railroad representative(s) named in the CROE; and (c) participate in a preconstruction meeting to coordinate work activities with Railroad if any work to be provided by the Contractor will involve flagging protection and/or if there is separate work to be performed by the Railroad for the Project.

151149.05 UTILITIES AND FIBER OPTICS

- A. All installations shall be constructed in accordance with current AREMA recommendations and Railroad specifications and requirements. Railroad general guidelines and the required application forms for utility installations can be found on the Railroad website at <http://www.uprr.com/reus/pipeline/install.shtml>.

- B. It shall be the responsibility of the County's, at its expense, to make arrangements directly with utility companies involving the protection, encasement, reinforcement, relocation, replacement, removing or abandonment in place of non-railroad facilities affected by the Project. Railroad has no obligation to supply additional Railroad property for non-railroad facilities affected by this Project, nor does the Railroad have any obligation to permit non railroad facilities to be abandoned in place or relocated on Railroad's property. Any facility and/or utility that crosses Railroad right of way must be covered under an agreement with the Railroad including, without limitation, any relocations of an existing facility and/or utility.

- C. Any fiber optic relocations or protections that are required due to this Project will be at the County's expense.

151149.06 GENERAL

- A. It is essential that the proposed construction shall be performed without interference to Railroad operations and in compliance with all applicable Railroad and Federal Railroad Administration rules and regulations. The Railroad shall be reimbursed by Polk County for train delay costs and lost revenue claims due to any delays or interruption of train operations resulting from the Contractor's construction or other activities.
- B. Track protection is required for all work equipment (including rubber tired equipment) operating within 25 feet from nearest rail. All work shall be designed and executed outside the temporary construction clearance envelope defined in Section 151149.12.
- C. The Contractor is also advised that new facilities within the Project may be scheduled to be built by the Railroad and that certain Contractor's activities cannot proceed until that work is complete. The Contractor shall be aware of the limits of responsibilities, allow sufficient time in the schedule for that work to be accomplished and shall coordinate its efforts with the Railroad.

151149.07 RAILROAD OPERATIONS

- A. The Contractor shall be advised that trains and/or equipment should be expected on any track, at any time, and in either direction. The Contractor shall communicate with the Railroad MTM Representative to improve the Contractor's understanding of Railroad traffic volume and operation at the Project site. The Contractor's bid shall be structured assuming intermittent track windows as defined in Section C below.
- B. All Railroad tracks within and adjacent to the Project site are to be assumed as active and rail traffic over these facilities shall be maintained throughout the Project. Activities may include both through moves and switching moves to local customers. Railroad traffic and operations can occur continuously throughout the day and night on these tracks and shall be maintained at all times as defined herein. The Contractor shall coordinate and schedule the work so that construction activities do not interfere with Railroad's operations.
- C. Work windows for this Project shall be coordinated with Polk County and the Railroad Project Representative and the Railroad MTM Representative. Types of work windows include Conditional Work Windows and Absolute Work Windows, as defined below:
 - i. Conditional Work Window: A period of time in which Railroad's operations have priority over construction activities. When construction activities may occur on and adjacent to the railroad tracks within 25 feet of the nearest track, a Railroad approved flag person will be required. At the direction of the flag person, upon approach of a train and when trains are present on the tracks, the tracks must be cleared (i.e., no construction equipment, materials or personnel within 25 feet from the nearest active track or as directed by the Railroad MTM Representative). Conditional Work Windows are available for the project subject to Railroad's local operating unit review and approval.
 - ii. Absolute Work Window: A period of time in which construction activities are given priority over Railroad's operations. During this time the designated Railroad track(s) will be inactive for train movements and may be fouled by the Contractor. Before the end of an Absolute Work Window, all Railroad tracks and signals must be completely operational for normal train operations. Also, all Railroad, Public Utilities Commission and Federal Railroad Administration requirements, codes and regulations for operational tracks must be complied with. Should the operating tracks and/or signals be affected, the Railroad will perform inspections of the work prior to placing the affected track back into service. Railroad

approved flag persons will be required for construction activities requiring an Absolute Work Window. Absolute Work Windows will generally not be granted. Any request will require a detailed written explanation for Railroad review and approval.

151149.08 RIGHT OF ENTRY, ADVANCE NOTICE AND WORK STOPPAGES

- A. Prior to beginning any work within the Railroad right-of-way, the Contractor shall enter into an agreement with the Railroad in the form of the Contractor's Right of Entry Agreement, attached as Attachment A, or latest version thereof provided by the Railroad. There is a fee for processing of the agreement which shall be borne by the Contractor. The right of entry agreement shall specify working time frames, flagging, inspection and insurance requirements and any other items specified by the Railroad.
- B. The Contractor shall give advance notice to the Railroad as required in the Contractor's Right of Entry Agreement before commencing work in connection with construction upon or over Railroad's right-of-way and shall observe the Railroad rules and regulations with respect thereto.
- C. All work upon the Railroad right-of-way shall be done at such times and in such a manner as not to interfere with or endanger the operations of the Railroad. Whenever work may affect the operations or safety of trains, the method of doing such work shall first be submitted to the Railroad MTM Representative for approval, but such approval shall not relieve the Contractor from liability. Any work to be performed by the Contractor, which requires flagging service or inspection service, shall be deferred until the flagging protection required by the Railroad is available at the job site. See Section 151149.19 for railroad flagging requirements.
- D. The Contractor shall make requests in writing to both the Railroad Project Representative and the Railroad MTM Representative for both Absolute and Conditional Work Windows, at least two weeks in advance of any work. The written request must include:
 - i. Description of work to be done.
 - ii. The days and hours that work will be performed.
 - iii. The exact location of the work and proximity to the tracks.
 - iv. The type of window and amount of time requested.
 - v. The designated contact person for the Contractor.

The Contractor shall provide a written confirmation notice to the Railroad MTM Representative at least fifteen (15) days prior to commencing work in connection with the approved work windows when work will be performed within **25 feet of any track center line**. All work shall be performed in accordance with previously approved work plans.

- E. Should a condition arise from, or in connection with, the work which requires immediate and unusual actions to be made to protect operations and property of the Railroad, the Contractor shall undertake such actions. If, in the judgment of the Railroad MTM Representative, such actions are insufficient, the Railroad MTM Representative may require or provide such actions as deemed necessary. In any event, such actions shall be at the Contractor's expense and without cost to the Railroad. The Railroad or Polk County have the right to order the Contractor to temporarily cease operations in the event of an emergency or if, in the opinion of the Railroad MTM Representative, the Contractor's operations may inhibit the Railroads operations. In the event such an order is given, the Contractor shall immediately notify the Polk County of the order.

151149.09 INSURANCE

The Contractor will need to obtain and furnish the insurance policies, binders, certificates and endorsements required by the Contractor's Right-of-Entry Agreement prior to signing the contract. The Contractor shall not begin work within the Railroad's right-of-way until the Railroad has been furnished the insurance policies, binders, certificates and endorsements required by the Contractor's Right-of-Entry Agreement, and the Railroad Project Representative has advised Polk County that such insurance is in accordance with such Agreement. The required insurance shall be kept in full force and effect

during the performance of work and thereafter until the Contractor removes all tools, equipment, and material from Railroad property and cleans the premises in a manner reasonably satisfactory to the Railroad.

Contractor shall use the website listed below to acquire Railroad train movement information for the purpose of obtaining Railroad Protective Liability Insurance:

<http://safetydata.fra.dot.gov/OfficeofSafety/PublicSite/Crossing/Crossing.aspx>

The US DOT Crossing Inventory Number will be located in the project plans. Zero trains per day will be displayed on the crossing inventory report for locations with grade separated crossings or at-grade crossings when there is less than one train per day. In these situations generating a map to find alternative crossing locations may be used to provide the number of trains per day and speed nearest the project location.

151149.10 RAILROAD SAFETY ORIENTATION

All personnel employed by the Agency, Contractor and all subcontractors must complete the Railroad's course "Property Access Training" and be registered prior to working on Railroad property. This orientation is available at <https://www.up.com/aboutup/community/safety/erailsafe/up-pat/index.htm> . This training is required to be completed annually. The preceding training does not apply for longitudinal fiber optic installations.

151149.11 COOPERATION

The Railroad shall cooperate with the Contractor in the scheduling of Project work with the understanding that Railroad's train operations at the job site shall have priority over the Contractor's activities.

151149.12 CONSTRUCTION CLEARANCES

The Contractor shall abide by the 21.5 foot temporary vertical construction clearance defined in section 4.4.1.1 and 15 foot temporary horizontal construction clearance defined in section 4.4.1.2 of BNSF and UPRR Guidelines for Railroad Grade Separation Projects. It shall be the Contractor's responsibility to obtain such guidelines from the Agency or Railroad.

Reduced temporary construction clearances, which are less than construction clearances defined above, will require special review and approval by the Railroad.

Any proposed variance on the specified minimum clearances due to the Contractor's operations shall be submitted to the Railroad Project Representative through the Agency at least thirty (30) days in advance of the work. No work shall be undertaken until the variance is approved in writing by the Railroad Project Representative.

151149.13 MAINTENANCE OF PROPER DRAINAGE AND DAMAGE TO RAILROAD FACILITIES

- A. The Contractor, at its expense, shall be required to maintain all ditches and drainage structures free of silt or other obstructions which may result from the Contractor's operations and to repair and restore any Railroad property, tracks and facilities of Railroad and/or its tenants.
- B. The Contractor must submit a proposed method of erosion control and have the method reviewed and approved by the Railroad prior to beginning any grading on the project site. Erosion control methods must comply with all applicable local, state and federal regulations.

151149.14 SITE INSPECTIONS BY RAILROAD PROJECT REPRESENTATIVE, RAILROAD MTM REPRESENTATIVE OR RAILROAD'S CONTRACTOR

- A. In addition to the office reviews of construction submittals, site observations will be performed by the Railroad Project Representative, Railroad MTM Representative or Railroad's Contractor at significant points during construction per Section 4.11 of BNSF and UPRR Guidelines for

Railroad Grade Separation Projects.

- B. Site inspections are not limited to the milestone events listed in the guidelines. Site visits to check the progress of work may be performed at any time throughout the construction process as deemed necessary by the Railroad.
- C. A detailed construction schedule, including the proposed temporary horizontal and vertical clearances and construction sequence for all work to be performed, shall be provided by the Contractor to Polk County for submittal to the Railroad's Project Representative for review and approval prior to commencement of work. This schedule shall also include the anticipated dates on which the above listed events will occur. This schedule shall be updated for all critical listed events as necessary but at least monthly so that site visits may be scheduled.

151149.15 RAILROAD REPRESENTATIVES

- A. Railroad representatives, conductors, flag persons or watch persons will be provided by the Railroad at the expense of Polk County to protect Railroad facilities, property and movements of its trains and engines. In general, the Railroad will furnish such personnel or other protective services as follows:
 - i. When any part of any equipment or object, such as erection or construction activities, is standing or being operated within 25 feet, measured horizontally from centerline, of any track on which trains may operate.
 - ii. For any excavation below the elevation of track subgrade when, in the opinion of the Railroad MTM Representative, the track or other Railroad facilities may be subject to settlement or movement.
 - iii. During any clearing, grubbing, excavation or grading in proximity to Railroad facilities which, in the opinion of the Railroad MTM Representative, may affect Railroad facilities or inhibit operations.
 - iv. During any Contractor's operations when, in the opinion of the Railroad MTM Representative, the Railroad facilities, including, but not limited to, tracks, buildings, signals, wire lines or pipe lines, may be endangered.
- B. The Contractor shall arrange with the Railroad Local Representative to provide the adequate number of flag persons to accomplish the work.

151149.16 WALKWAYS REQUIRED

Parallel to the outer side of each exterior track of multiple operated track and on each side of single operated track, an unobstructed continuous space suitable for trainman's use in walking along trains, extending in width not less than 12 feet perpendicular from centerline of track, shall be maintained. Any temporary impediments to walkways and track drainage encroachments or obstructions allowed during working hours must be covered, guarded and/or protected as soon as practical. Walkways with railings shall be constructed by the Contractor over open excavation areas when in close proximity of track, and railings shall not be closer than 9 feet perpendicular from the center line of tangent track or 9.5 feet horizontal from curved track.

151149.17 TRAFFIC CONTROL

The Contractor's operations which control traffic across or around Railroad facilities shall be coordinated with and approved by the Railroad MTM Representative and shall be in compliance with the MUTCD.

151149.18 CONSTRUCTION EXCAVATIONS; CALL BEFORE YOU DIG NUMBER

- A. The Contractor shall be required to take special precautions and care in connection with

excavating and shoring. Excavations for construction of footings, piers, columns, walls or other facilities that require shoring shall comply with requirements of OSHA, AREMA and Railroad "Guidelines for Temporary Shoring".

- B. In addition to calling the "811" number and/or the local "one call center", the Contractor shall call the Railroad's "Call Before Your Dig" number at least 48 hours prior to commencing work at 1-800-336-9193 during normal business hours (6:30 a.m. to 8:00 p.m. Central Standard Time, Monday through Friday, except holidays - also a 24 hour, 7 day a week number for emergency calls) to determine location of fiber optics. If a telecommunications system is buried anywhere on or near Railroad property, the Contractor will co-ordinate with the Railroad and the Telecommunication Company (ies) to arrange for relocation or other protection of the system prior to beginning any work on or near Railroad property. The determination of whether fiber optics will be affected by the Project shall be made during the initial design phase of the Project.
- C. The Railroad does not allow temporary at grade crossings unless absolutely necessary and there is no alternative route available to contractor to access the project site. Alternative plans should be considered to avoid crossing Railroad tracks at grade.

151149.19 RAILROAD FLAGGING

Contractor shall comply with all other requirements regarding Flagging Services covered by the Contractor's Right of Entry Agreement. Any costs associated with failure to abide by these requirements will be borne by the Contractor.

The estimated pay rate for each flag person that is a Railroad employee is \$1,400 per day for a(n) 8-hour work day with time and one-half for overtime, Saturdays, Sundays; double time and one-half for holidays. Flagging rates for Railroad's employees are set by the Railroad and are subject to change due to, but not limited to, travel time, setup plus, per diem and rest time (if work is required at night). The rates for Flagging Services charged by a CIC are set by such CIC, and are variable and subject to change at any time.

151149.20 CLEANING OF RIGHT-OF-WAY

The Contractor shall, upon completion of the work to be performed within the right-of-way and/or properties of the Railroad and adjacent to its tracks, wire lines and other facilities, promptly remove from the Railroad right-of-way all Contractor's tools, implements and other materials whether brought upon the right-of-way by the Contractor or any subcontractors employee or agent of Contractor or of any subcontractor, and leave the right-of-way in a clean and presentable condition to the satisfaction of the Railroad.

151149.21 CONTRACTOR'S RESPONSIBILITY OF SUPERVISION

The Contractor, at its expense, shall adequately supervise all work to be performed by the Contractor. Such responsibility shall not be lessened or otherwise affected by Railroad's approval of plans and specifications, or by the presence at the work site of the Railroad Project Representative, Railroad MTM Representative or any other Railroad representative or Railroad contractor providing inspection services, or by the compliance by the Contractor with any requests or recommendations made by such representatives. The Contractor will give due consideration to suggestions and recommendations made by such representatives for the safety and protection of the Railroad's property and operations.

151149.22 USE OF EXPLOSIVES AT PROJECT SITE PROHIBITED

The Contractor's use of explosives at the Project site is expressly prohibited unless authorized in advance in writing by the Railroad Project Representative.

151149.23 METHOD OF MEASUREMENT AND BASIS OF PAYMENT

Railroad Protective Liability Insurance for Union Pacific Railroad Co. will be paid for as a Lump Sum bid item. The Contractor will be paid the Lump Sum bid item price within 30 calendar days after receipt of a signed contract, provided that all necessary certificates of insurance have been submitted to the Department per Article SP-151149.

Attachments to this Specification:

- SP-151149, Attachment A: Contractor's Right of Entry Agreement

CONTRACTOR'S RIGHT OF ENTRY AGREEMENT

THIS AGREEMENT is made and entered into as of the _____ day of _____, 20_____, by and between **UNION PACIFIC RAILROAD COMPANY**, a Delaware corporation ("Railroad"); and _____, a _____ corporation ("Contractor").

RECITALS:

Contractor has been hired by _____ to perform work relating to _____

(the "work") with all or a portion of such work to be performed on property of Railroad in the vicinity of Railroad's Milepost _____ on Railroad's _____ [Subdivision or Branch] [at or near DOT No. _____ located at or near _____, in _____ County, State of _____, as such location is in the general location shown on the print marked **Exhibit A**, attached hereto and hereby made a part hereof, which work is the subject of a contract dated _____ between Railroad and _____.

Railroad is willing to permit Contractor to perform the work described above at the location described above subject to the terms and conditions contained in this agreement

AGREEMENT:

NOW, THEREFORE, it is mutually agreed by and between Railroad and Contractor, as follows:

ARTICLE 1 - DEFINITION OF CONTRACTOR.

For purposes of this agreement, all references in this agreement to Contractor shall include Contractor's contractors, subcontractors, officers, agents and employees, and others acting under its or their authority. For purposes of clarity, Contractor agrees that any CIC (defined below) hired by Contractor is a subcontractor of Contractor and therefore included in the defined term Contractor pursuant to the foregoing sentence.

ARTICLE 2 - RIGHT GRANTED; PURPOSE.

Railroad hereby grants to Contractor the right, during the term hereinafter stated and upon and subject to each and all of the terms, provisions and conditions herein contained, to enter upon and have ingress to and egress from the property described in the Recitals for the purpose of performing the work described in the Recitals above. The right herein granted to Contractor is limited to those portions of Railroad's property specifically described herein, or as designated by the Railroad Representative named in Article 4.

ARTICLE 3 - TERMS AND CONDITIONS CONTAINED IN EXHIBITS B AND C

The terms and conditions contained in **Exhibit B** and **Exhibit C**, attached hereto, are hereby made a part of this agreement.

ARTICLE 4 - ALL EXPENSES TO BE BORNE BY CONTRACTOR; RAILROAD REPRESENTATIVE.

A. Contractor shall bear any and all costs and expenses associated with any work performed by Contractor (including without limitation any CIC), or any costs or expenses incurred by Railroad relating to this agreement.

B. Contractor shall coordinate all of its work with the following Railroad representative or his or her duly authorized representative (the "Railroad Representative"):

C. Contractor, at its own expense, shall adequately police and supervise all work to be performed by Contractor and shall ensure that such work is performed in a safe manner as set forth in Section 7 of **Exhibit B**. The responsibility of Contractor for safe conduct and adequate policing and supervision of Contractor's work shall not be lessened or otherwise affected by Railroad's approval of plans and specifications involving the work, or by Railroad's collaboration in performance of any work, or by the presence at the work site of a Railroad Representative, or by compliance by Contractor with any requests or recommendations made by Railroad Representative.

ARTICLE 5 - SCHEDULE OF WORK ON A MONTHLY BASIS.

The Contractor, at its expense, shall provide on a monthly basis a detailed schedule of work to the Railroad Representative named in Article 4B above. The reports shall start at the execution of this agreement and continue until this agreement is terminated as provided in this agreement or until the Contractor has completed all work on Railroad's property.

ARTICLE 6 - TERM; TERMINATION.

A. The grant of right herein made to Contractor shall commence on the date of this agreement, and continue until _____, unless sooner terminated as herein provided, or at such time as Contractor has completed its work on Railroad's property, whichever is earlier. Contractor agrees to notify the Railroad Representative in writing when it has completed its work on Railroad's property.

B. This agreement may be terminated by either party on ten (10) days written notice to the other party.

ARTICLE 7 - CERTIFICATE OF INSURANCE.

A. Before commencing any work and throughout the entire term of this Agreement, Contractor, at its expense, shall procure and maintain in full force and effect the types and minimum limits of insurance specified in **Exhibit C** of this agreement and require each of its subcontractors to include the insurance endorsements as required under Section 12 of **Exhibit B** of this agreement.

B. Not more frequently than once every two (2) years, Railroad may reasonably modify the required insurance coverage to reflect then-current risk management practices in the railroad industry and underwriting practices in the insurance industry.

C. Upon request of Railroad, Contractor shall provide to Railroad a certificate issued by its insurance carrier evidencing the insurance coverage required under **Exhibit C**.

D. Contractor understands and accepts that the terms of this Article are wholly separate from and independent of the terms of any indemnity provisions contained in this Agreement.

D. Upon request of Railroad, insurance correspondence, binders, policies, certificates and endorsements shall be sent to:

Union Pacific Railroad Company
1400 Douglas Street, Stop 1690
Omaha, NE 68179
Attn: Manager
Folder No. 2992-98

ARTICLE 8 - PRECONSTRUCTION MEETING.

If the work to be performed by the Contractor will involve the Railroad providing any flagging protection (or if a CIC is approved to provide flagging protection pursuant to the terms set forth herein) and/or there is separate work to be performed by the Railroad, the Contractor confirms that no work shall commence until the Railroad and Contractor participate in a preconstruction meeting involving flagging procedures and coordination of work activities of the Contractor and the Railroad (and any CIC, as applicable.)

ARTICLE 9. DISMISSAL OF CONTRACTOR'S EMPLOYEE.

At the request of Railroad, Contractor shall remove from Railroad's property any employee of Contractor who fails to conform to the instructions of the Railroad Representative in connection with the work on Railroad's property, and any right of Contractor shall be suspended until such removal has occurred. Contractor shall indemnify Railroad against any claims arising from the removal of any such employee from Railroad's property.

ARTICLE 10. ADMINISTRATIVE FEE.

Upon the execution and delivery of this agreement, Contractor shall pay to Railroad _____ Dollars (\$_____) as reimbursement for clerical, administrative and handling expenses in connection with the processing of this agreement.

ARTICLE 11. CROSSINGS; COMPLIANCE WITH MUTCD AND FRA GUIDELINES.

A. No additional vehicular crossings (including temporary haul roads) or pedestrian crossings over Railroad's trackage shall be installed or used by Contractor without the prior written permission of Railroad.

B. Any permanent or temporary changes, including temporary traffic control, to crossings must conform to the Manual of Uniform Traffic Control Devices (MUTCD) and any applicable Federal Railroad Administration rules, regulations and guidelines, and must be reviewed by the Railroad prior to any changes being implemented. In the event the Railroad is found to be out of compliance with federal safety regulations due to the Contractor's modifications, negligence, or any other reason arising from the Contractor's presence on the Railroad's property, the Contractor agrees to assume liability for any civil penalties imposed upon the Railroad for such noncompliance.

ARTICLE 12.- EXPLOSIVES.

Explosives or other highly flammable substances shall not be stored or used on Railroad's property without the prior written approval of Railroad.

IN WITNESS WHEREOF, the parties hereto have duly executed this agreement in duplicate as of the date first herein written.

UNION PACIFIC RAILROAD COMPANY

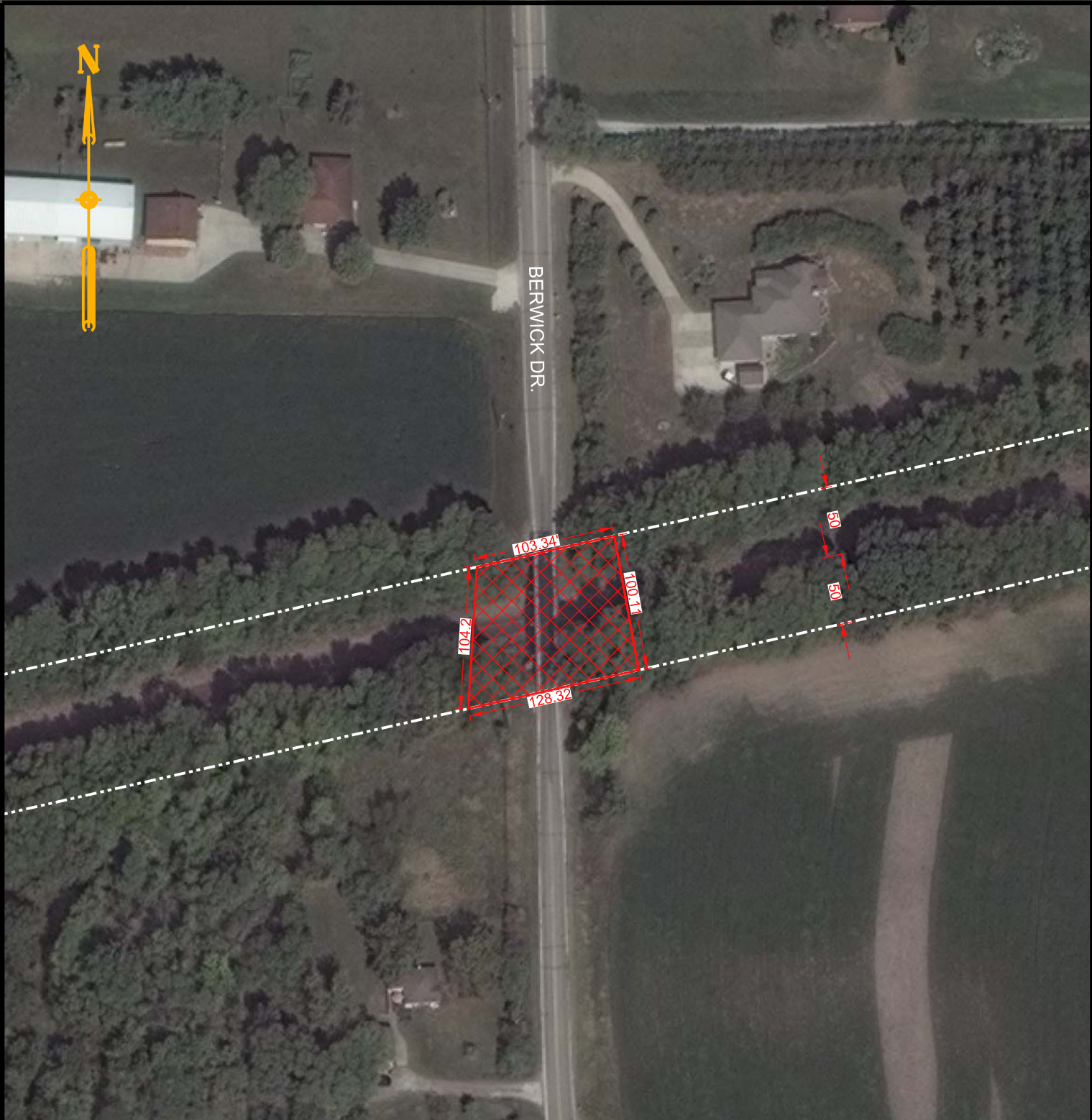
By: _____
Title: _____

(Name of Contractor)


By: _____
Title: _____

EXHIBIT A
TO
CONTRACTOR'S RIGHT OF ENTRY AGREEMENT

Exhibit A will be a print showing the general location of the work site.



LEGEND:

CROSSING AREA..... 

UPRRCO. R/W OUTLINED..... 

CROSSING AREA: 0.266 ACRES +/-

NOTE: BEFORE YOU BEGIN ANY WORK, SEE AGREEMENT FOR FIBER OPTIC PROVISIONS.

EXHIBIT "A"

UNION PACIFIC RAILROAD COMPANY

DES MOINES, POLK COUNTY, IA

M.P. 81.05 - MASON CITY SUB.

RI/IA/V-555/3

SCALE: 1" = 100'

OFFICE OF REAL ESTATE
OMAHA, NEBRASKA DATE: 7-24-2019

DSK FILE: 3160-09

CADD FILENAME	0316009
---------------	---------

SCAN FILENAME	AERIAL PRINT
---------------	--------------

EXHIBIT B
TO
CONTRACTOR'S RIGHT OF ENTRY AGREEMENT

Section 1. NOTICE OF COMMENCEMENT OF WORK - RAILROAD FLAGGING - PRIVATE FLAGGING.

A. Contractor agrees to notify the Railroad Representative at least ten (10) working days in advance of Contractor commencing its work and at least thirty (30) working days in advance of proposed performance of any work by Contractor in which any person or equipment will be within twenty-five (25) feet of any track, or will be near enough to any track that any equipment extension (such as, but not limited to, a crane boom) will reach to within twenty-five (25) feet of any track.

B. No work of any kind shall be performed, and no person, equipment, machinery, tool(s), material(s), vehicle(s), or thing(s) shall be located, operated, placed, or stored within twenty-five (25) feet of any of Railroad's track(s) at any time, for any reason, unless and until a Railroad approved flagman is provided to watch for trains. Upon receipt of such thirty (30)-day notice, the Railroad Representative will determine and inform Contractor whether a flagman need be present and whether Contractor needs to implement any special protective or safety measures.

C. Contractor shall be permitted to hire a private contractor to perform flagging or other special protective or safety measures (such private contractor being commonly known in the railroad industry as a contractor-in-charge ("CIC")) in lieu of Railroad providing such services or in concert with Railroad providing such services, subject to prior written approval by Railroad, which approval shall be in Railroad's sole and absolute discretion. If Railroad agrees to permit Contractor to utilize a CIC pursuant to the preceding sentence, Contractor shall obtain Railroad's prior approval in writing for each of the following items, as determined in all respects in Railroad's sole and absolute discretion: (i) the identity of the third-party performing the role of CIC; (ii) the scope of the services to be performed for the project by the approved CIC; and (iii) any other terms and conditions governing such services to be provided by the CIC. If flagging or other special protective or safety measures are performed by an approved CIC, Contractor shall be solely responsible for (and shall timely pay such CIC for) its services. Railroad reserves the right to rescind any approval pursuant to this Section 1, Subsection C., in whole or in part, at any time, as determined in Railroad's sole and absolute discretion.

D. If any flagging or other special protective or safety measures are performed by employees of Railroad and/or any contractor of Railroad, Railroad will bill Contractor for such expenses incurred by Railroad, unless Railroad and a federal, state or local governmental entity have agreed that Railroad is to bill such expenses to the federal, state or local governmental entity. If Railroad will be sending the bills to Contractor, Contractor shall pay such bills within thirty (30) days of Contractor's receipt of billing.

E. If any flagging or other special protective or safety measures are performed by Railroad or a CIC, Contractor agrees that Contractor is not relieved of any of its responsibilities or liabilities set forth in this agreement.

F. The provisions set forth in this subsection are only applicable for Flagging Services performed by employees of Railroad: the rate of pay per hour for each flagman will be the prevailing hourly rate in effect for an eight-hour day for the class of flagmen used during regularly assigned hours and overtime in accordance with labor agreements and schedules in effect at the time the work is performed. In addition to the cost of such labor, a composite charge for vacation, holiday, health and welfare, supplemental sickness, Railroad Retirement and unemployment compensation, supplemental pension, Employees Liability and Property Damage and Administration will be included, computed on actual payroll. The composite charge will be the prevailing composite charge in effect at the time the work is performed. One and one-half times the current hourly rate is paid for overtime, Saturdays and Sundays, and two and one-half times current hourly rate for holidays. Wage rates are subject to change, at any time, by law or by agreement between Railroad and its employees, and may be retroactive as a result of negotiations or a ruling of an authorized governmental agency. Additional charges on labor are also subject to change. If the wage rate or additional charges are changed, Contractor (or the governmental entity, as applicable) shall pay on the basis of the new rates and charges. If flagging is performed by Railroad, reimbursement to Railroad will be required covering the full eight-hour day during which any flagman is furnished, unless the flagman can be assigned to other Railroad work during a portion of such day, in which event reimbursement will not be required for the portion of the day during which the flagman is engaged in other Railroad work.

Reimbursement will also be required for any day not actually worked by the flagman following the flagman's assignment to work on the project for which Railroad is required to pay the flagman and which could not reasonably be avoided by Railroad by assignment of such flagman to other work, even though Contractor may not be working during such time. When it becomes necessary for Railroad to bulletin and assign an employee to a flagging position in compliance with union collective bargaining agreements, Contractor must provide Railroad a minimum of five (5) days notice prior to the cessation of the need for a flagman. If five (5) days notice of cessation is not given, Contractor will still be required to pay flagging charges for the five (5) day notice period required by union agreement to be given to the employee, even though flagging is not required for that period. An additional thirty (30) days notice must then be given to Railroad if flagging services are needed again after such five day cessation notice has been given to Railroad.

Section 2. LIMITATION AND SUBORDINATION OF RIGHTS GRANTED

A. The foregoing grant of right is subject and subordinate to the prior and continuing right and obligation of the Railroad to use and maintain its entire property including the right and power of Railroad to construct, maintain, repair, renew, use, operate, change, modify or relocate railroad tracks, roadways, signal, communication, fiber optics, or other wirelines, pipelines and other facilities upon, along or across any or all parts of its property, all or any of which may be freely done at any time or times by Railroad without liability to Contractor or to any other party for compensation or damages.

B. The foregoing grant is also subject to all outstanding superior rights (whether recorded or unrecorded and including those in favor of licensees and lessees of Railroad's property, and others) and the right of Railroad to renew and extend the same, and is made without covenant of title or for quiet enjoyment.

Section 3. NO INTERFERENCE WITH OPERATIONS OF RAILROAD AND ITS TENANTS.

A. Contractor shall conduct its operations so as not to interfere with the continuous and uninterrupted use and operation of the railroad tracks and property of Railroad, including without limitation, the operations of Railroad's lessees, licensees or others, unless specifically authorized in advance by the Railroad Representative. Nothing shall be done or permitted to be done by Contractor at any time that would in any manner impair the safety of such operations. When not in use, Contractor's machinery and materials shall be kept at least fifty (50) feet from the centerline of Railroad's nearest track, and there shall be no vehicular crossings of Railroads tracks except at existing open public crossings.

B. Operations of Railroad and work performed by Railroad personnel and delays in the work to be performed by Contractor caused by such railroad operations and work are expected by Contractor, and Contractor agrees that Railroad shall have no liability to Contractor, or any other person or entity for any such delays. The Contractor shall coordinate its activities with those of Railroad and third parties so as to avoid interference with railroad operations. The safe operation of Railroad train movements and other activities by Railroad takes precedence over any work to be performed by Contractor.

Section 4. LIENS.

Contractor shall pay in full all persons who perform labor or provide materials for the work to be performed by Contractor. Contractor shall not create, permit or suffer any mechanic's or materialmen's liens of any kind or nature to be created or enforced against any property of Railroad for any such work performed. Contractor shall indemnify and hold harmless Railroad from and against any and all liens, claims, demands, costs or expenses of whatsoever nature in any way connected with or growing out of such work done, labor performed, or materials furnished. If Contractor fails to promptly cause any lien to be released of record, Railroad may, at its election, discharge the lien or claim of lien at Contractor's expense.

Section 5. PROTECTION OF FIBER OPTIC CABLE SYSTEMS.

A. Fiber optic cable systems may be buried on Railroad's property. Protection of the fiber optic cable systems is of extreme importance since any break could disrupt service to users resulting in business interruption and loss of revenue and profits. Contractor shall telephone Railroad during normal business hours (7:00 a.m. to 9:00 p.m. Central Time, Monday through Friday, except holidays) at 1-800-336-9193 (also a 24-hour, 7-day number for emergency calls) to determine if fiber optic cable is buried anywhere on Railroad's property to be used by Contractor. If it is,

Contractor will telephone the telecommunications company(ies) involved, make arrangements for a cable locator and, if applicable, for relocation or other protection of the fiber optic cable. Contractor shall not commence any work until all such protection or relocation (if applicable) has been accomplished.

B. IN ADDITION TO OTHER INDEMNITY PROVISIONS IN THIS AGREEMENT, CONTRACTOR SHALL INDEMNIFY, DEFEND AND HOLD RAILROAD HARMLESS FROM AND AGAINST ALL COSTS, LIABILITY AND EXPENSE WHATSOEVER (INCLUDING, WITHOUT LIMITATION, ATTORNEYS' FEES, COURT COSTS AND EXPENSES) ARISING OUT OF ANY ACT OR OMISSION OF CONTRACTOR, ITS AGENTS AND/OR EMPLOYEES, THAT CAUSES OR CONTRIBUTES TO (1) ANY DAMAGE TO OR DESTRUCTION OF ANY TELECOMMUNICATIONS SYSTEM ON RAILROAD'S PROPERTY, AND/OR (2) ANY INJURY TO OR DEATH OF ANY PERSON EMPLOYED BY OR ON BEHALF OF ANY TELECOMMUNICATIONS COMPANY, AND/OR ITS CONTRACTOR, AGENTS AND/OR EMPLOYEES, ON RAILROAD'S PROPERTY. CONTRACTOR SHALL NOT HAVE OR SEEK RECOURSE AGAINST RAILROAD FOR ANY CLAIM OR CAUSE OF ACTION FOR ALLEGED LOSS OF PROFITS OR REVENUE OR LOSS OF SERVICE OR OTHER CONSEQUENTIAL DAMAGE TO A TELECOMMUNICATION COMPANY USING RAILROAD'S PROPERTY OR A CUSTOMER OR USER OF SERVICES OF THE FIBER OPTIC CABLE ON RAILROAD'S PROPERTY.

Section 6. PERMITS - COMPLIANCE WITH LAWS.

In the prosecution of the work covered by this agreement, Contractor shall secure any and all necessary permits and shall comply with all applicable federal, state and local laws, regulations and enactments affecting the work including, without limitation, all applicable Federal Railroad Administration regulations.

Section 7. SAFETY.

A. Safety of personnel, property, rail operations and the public is of paramount importance in the prosecution of any work on Railroad property performed by Contractor. Contractor shall be responsible for initiating, maintaining and supervising all safety, operations and programs in connection with the work. Contractor shall, at a minimum, comply with Railroad's then current safety standards located at the below web address ("Railroad's Safety Standards") to ensure uniformity with the safety standards followed by Railroad's own forces. As a part of Contractor's safety responsibilities, Contractor shall notify Railroad if Contractor determines that any of Railroad's Safety Standards are contrary to good safety practices. Contractor shall furnish copies of Railroad's Safety Standards to each of its employees before they enter Railroad property.

http://www.up.com/cs/groups/public/@uprr/@suppliers/documents/up_pdf_nativedocs/pdf_up_supplier_safety_req.pdf

B. Without limitation of the provisions of paragraph A above, Contractor shall keep the job site free from safety and health hazards and ensure that its employees are competent and adequately trained in all safety and health aspects of the job.

C. Contractor shall have proper first aid supplies available on the job site so that prompt first aid services may be provided to any person injured on the job site. Contractor shall promptly notify Railroad of any U.S. Occupational Safety and Health Administration reportable injuries. Contractor shall have a nondelegable duty to control its employees while they are on the job site or any other property of Railroad, and to be certain they do not use, be under the influence of, or have in their possession any alcoholic beverage, drug or other substance that may inhibit the safe performance of any work.

D. If and when requested by Railroad, Contractor shall deliver to Railroad a copy of Contractor's safety plan for conducting the work (the "Safety Plan"). Railroad shall have the right, but not the obligation, to require Contractor to correct any deficiencies in the Safety Plan. The terms of this agreement shall control if there are any inconsistencies between this agreement and the Safety Plan.

Section 8. INDEMNITY.

A. TO THE EXTENT NOT PROHIBITED BY APPLICABLE STATUTE, CONTRACTOR SHALL INDEMNIFY, DEFEND AND HOLD HARMLESS RAILROAD, ITS AFFILIATES, AND ITS AND THEIR OFFICERS,

AGENTS AND EMPLOYEES (INDIVIDUALLY AN "INDEMNIFIED PARTY" OR COLLECTIVELY "INDEMNIFIED PARTIES") FROM AND AGAINST ANY AND ALL LOSS, DAMAGE, INJURY, LIABILITY, CLAIM, DEMAND, COST OR EXPENSE (INCLUDING, WITHOUT LIMITATION, ATTORNEY'S, CONSULTANT'S AND EXPERT'S FEES, AND COURT COSTS), FINE OR PENALTY (COLLECTIVELY, "LOSS") INCURRED BY ANY PERSON (INCLUDING, WITHOUT LIMITATION, ANY INDEMNIFIED PARTY, CONTRACTOR, OR ANY EMPLOYEE OF CONTRACTOR OR OF ANY INDEMNIFIED PARTY) ARISING OUT OF OR IN ANY MANNER CONNECTED WITH (I) ANY WORK PERFORMED BY CONTRACTOR, OR (II) ANY ACT OR OMISSION OF CONTRACTOR, ITS OFFICERS, AGENTS OR EMPLOYEES, OR (III) ANY BREACH OF THIS AGREEMENT BY CONTRACTOR.

B. THE RIGHT TO INDEMNITY UNDER THIS SECTION 8 SHALL ACCRUE UPON OCCURRENCE OF THE EVENT GIVING RISE TO THE LOSS, AND SHALL APPLY REGARDLESS OF ANY NEGLIGENCE OR STRICT LIABILITY OF ANY INDEMNIFIED PARTY, EXCEPT WHERE THE LOSS IS CAUSED BY THE SOLE ACTIVE NEGLIGENCE OF AN INDEMNIFIED PARTY AS ESTABLISHED BY THE FINAL JUDGMENT OF A COURT OF COMPETENT JURISDICTION. THE SOLE ACTIVE NEGLIGENCE OF ANY INDEMNIFIED PARTY SHALL NOT BAR THE RECOVERY OF ANY OTHER INDEMNIFIED PARTY.

C. CONTRACTOR EXPRESSLY AND SPECIFICALLY ASSUMES POTENTIAL LIABILITY UNDER THIS SECTION 8 FOR CLAIMS OR ACTIONS BROUGHT BY CONTRACTOR'S OWN EMPLOYEES. CONTRACTOR WAIVES ANY IMMUNITY IT MAY HAVE UNDER WORKER'S COMPENSATION OR INDUSTRIAL INSURANCE ACTS TO INDEMNIFY THE INDEMNIFIED PARTIES UNDER THIS SECTION 8. CONTRACTOR ACKNOWLEDGES THAT THIS WAIVER WAS MUTUALLY NEGOTIATED BY THE PARTIES HERETO.

D. NO COURT OR JURY FINDINGS IN ANY EMPLOYEE'S SUIT PURSUANT TO ANY WORKER'S COMPENSATION ACT OR THE FEDERAL EMPLOYERS' LIABILITY ACT AGAINST A PARTY TO THIS AGREEMENT MAY BE RELIED UPON OR USED BY CONTRACTOR IN ANY ATTEMPT TO ASSERT LIABILITY AGAINST ANY INDEMNIFIED PARTY.

E. THE PROVISIONS OF THIS SECTION 8 SHALL SURVIVE THE COMPLETION OF ANY WORK PERFORMED BY CONTRACTOR OR THE TERMINATION OR EXPIRATION OF THIS AGREEMENT. IN NO EVENT SHALL THIS SECTION 8 OR ANY OTHER PROVISION OF THIS AGREEMENT BE DEEMED TO LIMIT ANY LIABILITY CONTRACTOR MAY HAVE TO ANY INDEMNIFIED PARTY BY STATUTE OR UNDER COMMON LAW.

Section 9. RESTORATION OF PROPERTY.

In the event Railroad authorizes Contractor to take down any fence of Railroad or in any manner move or disturb any of the other property of Railroad in connection with the work to be performed by Contractor, then in that event Contractor shall, as soon as possible and at Contractor's sole expense, restore such fence and other property to the same condition as the same were in before such fence was taken down or such other property was moved or disturbed. Contractor shall remove all of Contractor's tools, equipment, rubbish and other materials from Railroad's property promptly upon completion of the work, restoring Railroad's property to the same state and condition as when Contractor entered thereon.

Section 10. WAIVER OF DEFAULT.

Waiver by Railroad of any breach or default of any condition, covenant or agreement herein contained to be kept, observed and performed by Contractor shall in no way impair the right of Railroad to avail itself of any remedy for any subsequent breach or default.

Section 11. MODIFICATION - ENTIRE AGREEMENT.

No modification of this agreement shall be effective unless made in writing and signed by Contractor and Railroad. This agreement and the exhibits attached hereto and made a part hereof constitute the entire understanding between Contractor and Railroad and cancel and supersede any prior negotiations, understandings or agreements, whether written or oral, with respect to the work to be performed by Contractor.

Section 12. ASSIGNMENT - SUBCONTRACTING.

Contractor shall not assign or subcontract this agreement, or any interest therein, without the written consent of the Railroad. Contractor shall be responsible for the acts and omissions of all subcontractors. Before Contractor commences any work, the Contractor shall, except to the extent prohibited by law; (1) require each of its subcontractors to include the Contractor as "Additional Insured" on the subcontractor's Commercial General Liability policy and Umbrella or Excess policies (if applicable) with respect to all liabilities arising out of the subcontractor's performance of work on behalf of the Contractor by endorsing these policies with ISO Additional Insured Endorsements CG 20 10, and CG 20 37 (or substitute forms providing equivalent coverage; (2) require each of its subcontractors to endorse their Commercial General Liability Policy with "Contractual Liability Railroads" ISO Form CG 24 17 10 01 (or a substitute form providing equivalent coverage) for the job site; and (3) require each of its subcontractors to endorse their Business Automobile Policy with "Coverage For Certain Operations In Connection With Railroads" ISO Form CA 20 70 10 01 (or a substitute form providing equivalent coverage) for the job site.

EXHIBIT C
TO
CONTRACTOR'S
RIGHT OF ENTRY AGREEMENT

Union Pacific Railroad Company
Insurance Requirements For
Contractor's Right of Entry Agreement

During the entire term of this Agreement and course of the Project, and until all Project work on Railroad's property has been completed and all equipment and materials have been removed from Railroad's property and Railroad's property has been clean and restored to Railroad's satisfaction, Contractor shall, at its sole cost and expense, procure and maintain the following insurance coverage:

- A. Commercial General Liability insurance.** Commercial general liability (CGL) with a limit of not less than \$5,000,000 each occurrence and an aggregate limit of not less than \$10,000,000. CGL insurance must be written on ISO occurrence form CG 00 01 12 04 (or a substitute form providing equivalent coverage).

The policy must also contain the following endorsement, which must be stated on the certificate of insurance:

- Contractual Liability Railroads ISO form CG 24 17 10 01 (or a substitute form providing equivalent coverage) showing "Union Pacific Railroad Company Property" as the Designated Job Site.
- Designated Construction Project(s) General Aggregate Limit ISO Form CG 25 03 03 97 (or a substitute form providing equivalent coverage) showing the project on the form schedule.

- B. Business Automobile Coverage insurance.** Business auto coverage written on ISO form CA 00 01 10 01 (or a substitute form providing equivalent liability coverage) with a combined single limit of not less \$5,000,000 for each accident and coverage must include liability arising out of any auto (including owned, hired and non-owned autos).

The policy must contain the following endorsements, which must be stated on the certificate of insurance:

- Coverage For Certain Operations In Connection With Railroads ISO form CA 20 70 10 01 (or a substitute form providing equivalent coverage) showing "Union Pacific Property" as the Designated Job Site.
- Motor Carrier Act Endorsement - Hazardous materials clean up (MCS-90) if required by law.

- C. Workers' Compensation and Employers' Liability insurance.** Coverage must include but not be limited to:
- Contractor's statutory liability under the workers' compensation laws of the state where the work is being performed.
 - Employers' Liability (Part B) with limits of at least \$500,000 each accident, \$500,000 disease policy limit \$500,000 each employee.

If Contractor is self-insured, evidence of state approval and excess workers compensation coverage must be provided. Coverage must include liability arising out of the U. S. Longshoremen's and Harbor Workers' Act, the Jones Act, and the Outer Continental Shelf Land Act, if applicable.

- D. Railroad Protective Liability insurance.** Contractor must maintain "Railroad Protective Liability" (RPL) insurance written on ISO occurrence form CG 00 35 12 04 (or a substitute form providing equivalent coverage) on behalf of Railroad as named insured, with a limit of not less than \$2,000,000 per occurrence and an aggregate of \$6,000,000. The definition of "JOB LOCATION" and "WORK" on the declaration page of the policy shall refer to this agreement and shall describe all WORK or OPERATIONS performed under this agreement. Contractor shall provide this agreement to Contractor's insurance agent(s) and/or broker(s) and Contractor shall instruct such agent(s) and/or broker(s) to procure the insurance coverage required by this agreement. A BINDER STATING THE POLICY IS IN PLACE MUST BE SUBMITTED TO RAILROAD BEFORE THE WORK MAY COMMENCE AND UNTIL THE ORIGINAL POLICY IS FORWARDED TO UNION PACIFIC RAILROAD.

- E. **Umbrella or Excess** insurance. If Contractor utilizes umbrella or excess policies, these policies must “follow form” and afford no less coverage than the primary policy.
- F. **Pollution Liability** insurance. Pollution liability coverage must be included when the scope of the work as defined in the agreement includes installation, temporary storage, or disposal of any "hazardous" material that is injurious in or upon land, the atmosphere, or any watercourses; or may cause bodily injury at any time.

If required, coverage may be provided in separate policy form or by endorsement to Contractors CGL or RPL. Any form coverage must be equivalent to that provided in ISO form CG 24 15 "Limited Pollution Liability Extension Endorsement" or CG 28 31 "Pollution Exclusion Amendment" with limits of at least \$5,000,000 per occurrence and an aggregate limit of \$10,000,000.

If the scope of work as defined in this agreement includes the disposal of any hazardous or non-hazardous materials from the job site, Contractor must furnish to Railroad evidence of pollution legal liability insurance maintained by the disposal site operator for losses arising from the insured facility accepting the materials, with coverage in minimum amounts of \$1,000,000 per loss, and an annual aggregate of \$2,000,000.

Other Requirements

- G. All policy(ies) required above (except business automobile, worker’s compensation and employers liability) must include Railroad as “Additional Insured” using ISO Additional Insured Endorsements CG 20 10, and CG 20 37 (or substitute forms providing equivalent coverage). The coverage provided to Railroad as additional insured shall not be limited by Contractor's liability under the indemnity provisions of this agreement. BOTH CONTRACTOR AND RAILROAD EXPECT THAT UNION PACIFIC RAILROAD COMPANY WILL BE PROVIDED WITH THE BROADEST POSSIBLE COVERAGE AVAILABLE BY OPERATION OF LAW UNDER ISO ADDITIONAL INSURED FORMS CG 20 10 AND CG 20 37.
- H. Punitive damages exclusion, if any, must be deleted (and the deletion indicated on the certificate of insurance), unless (a) insurance coverage may not lawfully be obtained for any punitive damages that may arise under this agreement, or (b) all punitive damages are prohibited by all states in which this agreement will be performed.
- I. Contractor waives all rights of recovery, and its insurers also waive all rights of subrogation of damages against Railroad and its agents, officers, directors and employees for damages covered by the workers compensation and employers liability or commercial umbrella or excess liability obtained by Contractor required in this agreement where prohibited by law. This waiver must be stated on the certificate of insurance.
- J. Prior to commencing the work, Contractor shall furnish Railroad with a certificate(s) of insurance, executed by a duly authorized representative of each insurer, showing compliance with the insurance requirements in this agreement.
- K. All insurance policies must be written by a reputable insurance company acceptable to Railroad or with a current Best's Insurance Guide Rating of A- and Class VII or better, and authorized to do business in the state where the work is being performed.
- L. The fact that insurance is obtained by Contractor or by Railroad on behalf of Contractor will not be deemed to release or diminish the liability of Contractor, including, without limitation, liability under the indemnity provisions of this agreement. Damages recoverable by Railroad from Contractor or any third party will not be limited by the amount of the required insurance coverage.