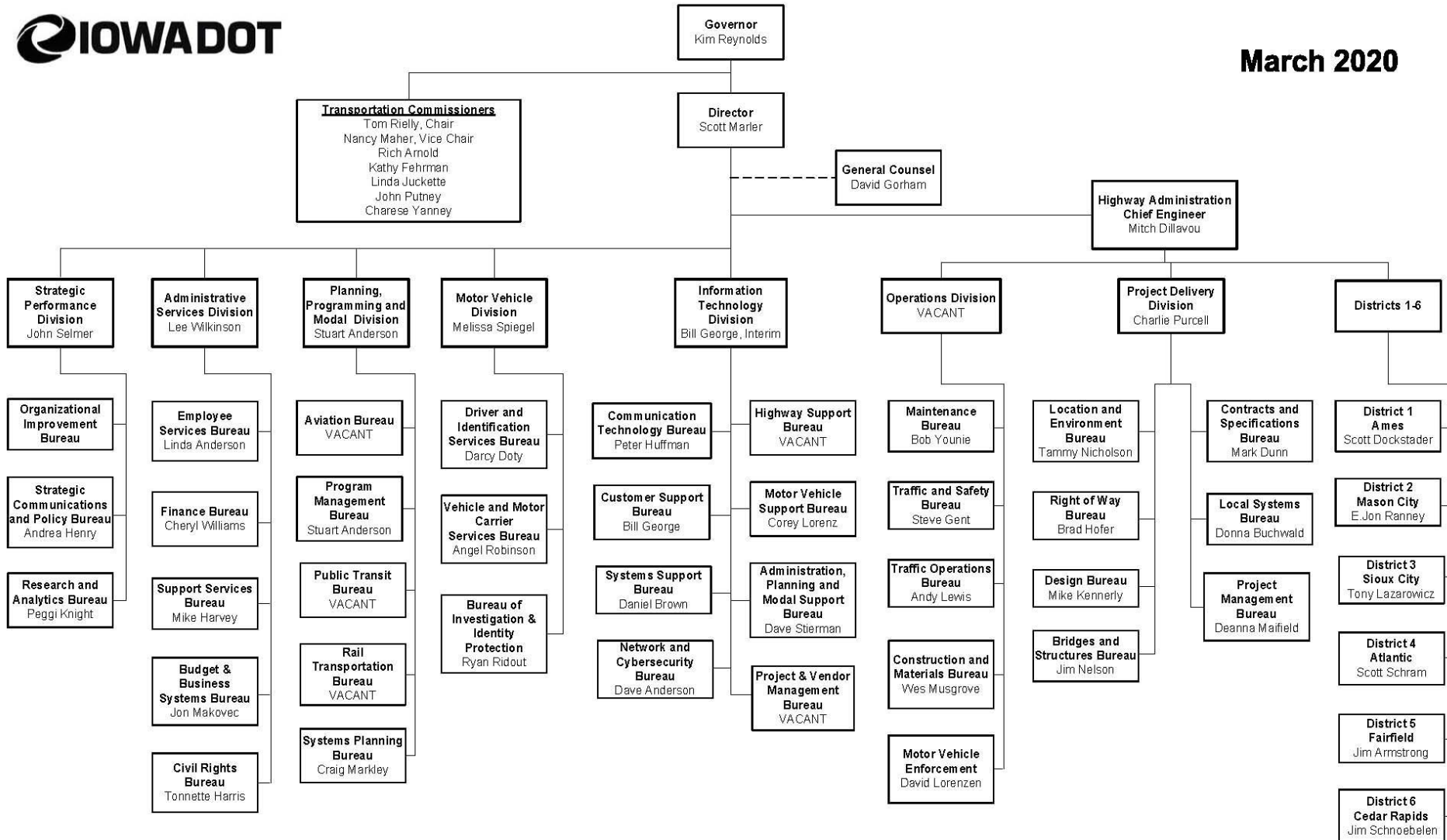


1:00 P.M.	Meeting Logistics and Welcome	Mark Wyatt
1:10 P.M.	Iowa DOT Organizational Restructuring Update on the Iowa DOT organizational restructure and the new Transportation Development Division.	Craig Markley
1:25 P.M.	COVID-19 Relief Recreational Trails Program <u>Share information related to the COVI-19 relief trail funding program, its guidelines, and application.</u> https://iowadot.gov/systems_planning/Grant-Programs/-Federal-and-State-Recreational-Trails	Deb Arp Scott Flagg
1:40 P.M.	Iowa Legislature Update Update on bicycle related bills introduced into the Iowa Legislature, 89th Legislative Session	Mark Wyatt
1:55 P.M.	Bicycle and Pedestrian Plan Implementation Updates Complete Streets Policy, 2020 Fiscal Impact Bicycle Compatibility Rating update United States Bicycle Route System Lewis and Clark Trail Signage	Milly Ortiz
2:15 P.M.	Breakout Session set-up	Milly Ortiz
2:20 P.M.	Breakout Session (More details would be sent prior to the meeting) Please come prepared to provide input regarding: Bicycle and Pedestrian Plan's Implementation Actions Future meeting structure, topics, etc. Opportunities for improvement	All Attendees
2:50 P.M.	Roundtable Announcements/Updates Open forum to share updates and information.	All Attendees

PREVIOUS IOWA DOT ORGANIZATIONAL CHART



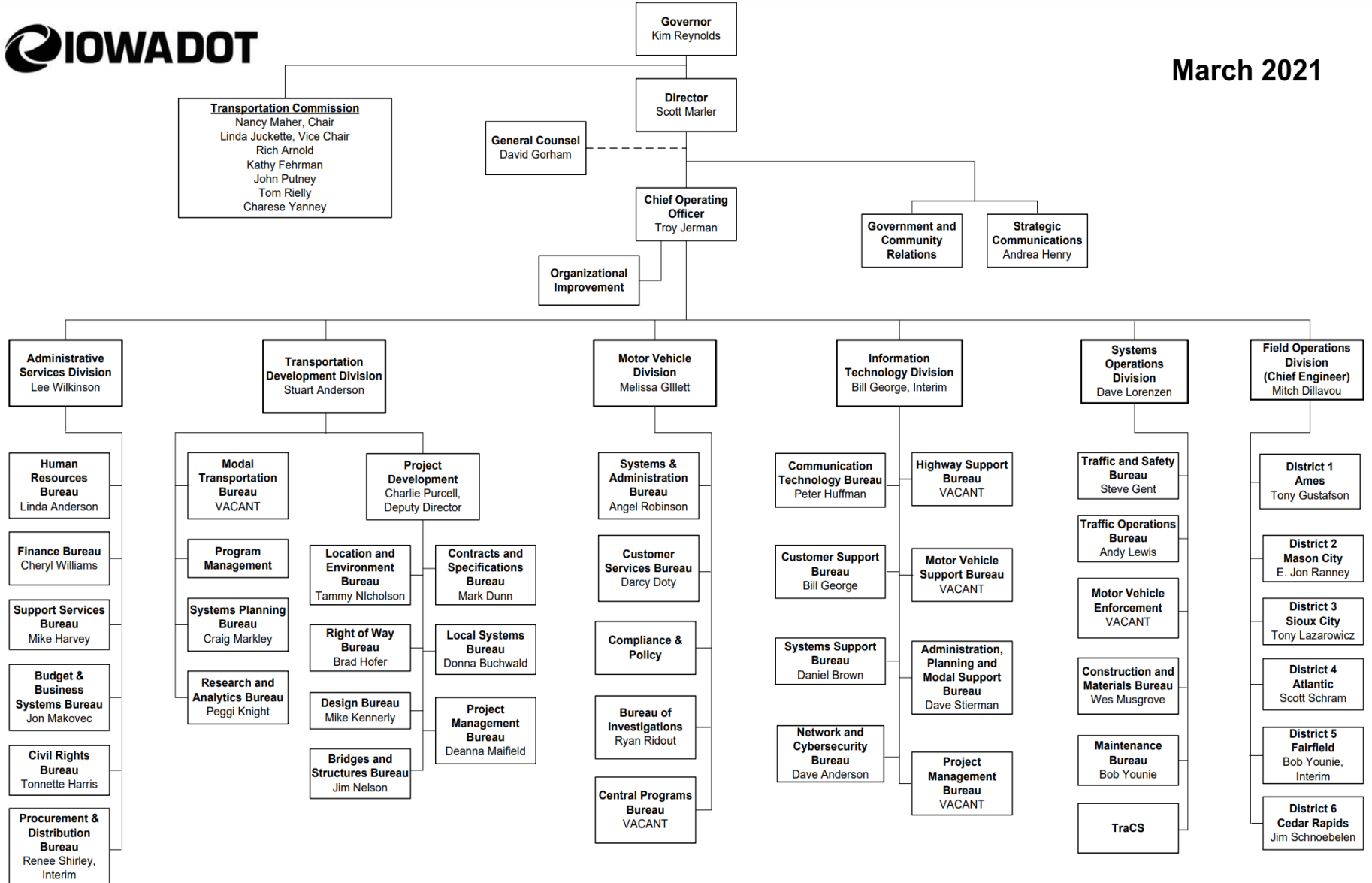
March 2020



IOWA DOT ORGANIZATIONAL RESTRUCTURING



March 2021



COVID-19 RELIEF RECREATIONAL TRAILS PROGRAM



OVERVIEW

- ALL FEDERAL REQUIREMENTS APPLY
- ELIGIBLE APPLICANTS: FEDERAL, STATE, LOCAL GOVERNMENTS.
 - PARTNERSHIPS: NON-ELIGIBLE PROJECT SPONSOR (SUCH AS A NON-PROFIT) MAY PARTNER WITH AN ELIGIBLE CO-SPONSOR, IF CO-SPONSOR WILL ADMINISTER THE PROJECT
- \$5 MILLION COMPETITIVE APPLICATION CYCLE
 - MINIMUM GRANT AMOUNT: \$500,000
 - MAXIMUM GRANT AMOUNT: \$1.25 MILLION
- PROJECT COMPLETION IN 2 YEARS

COVID-19 RELIEF RECREATIONAL TRAILS PROGRAM



ELIGIBLE ACTIVITIES

- CONSTRUCTION OF NEW TRAILS
- MAINTENANCE, RESURFACING AND RESTORATION OF EXISTING RECREATIONAL TRAILS
- DEVELOPMENT AND REHAB OF TRAILSIDE FACILITIES AND TRAIL LINKAGES
- ACQUISITION OF EASEMENTS AND FEE SIMPLE TITLE TO PROPERTY FOR REC TRAILS AND CORRIDORS

COVID-19 RELIEF RECREATIONAL TRAILS PROGRAM

SCORING EMPHASIS

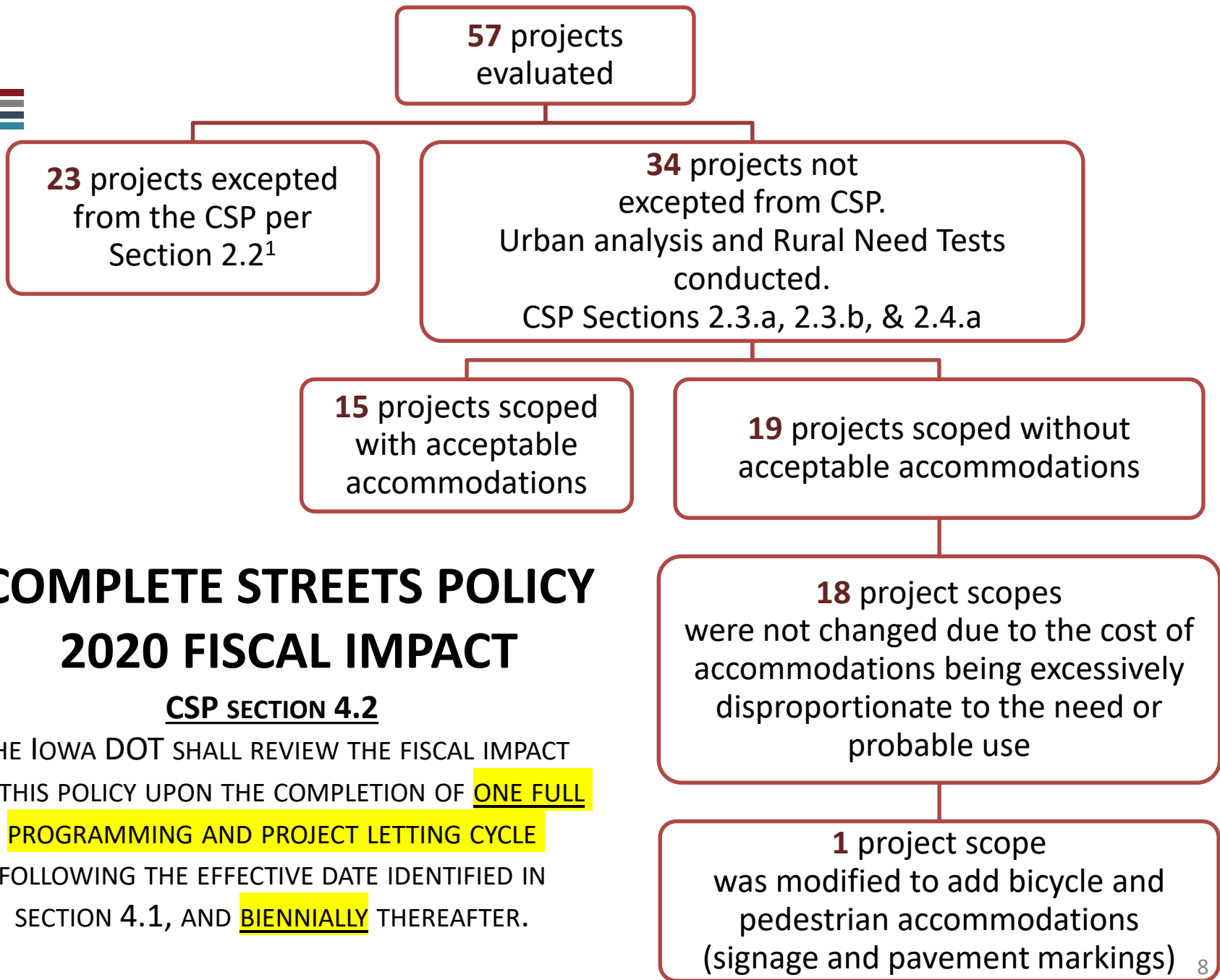


- THE DEGREE TO WHICH THE PROJECT PROVIDES DEVELOPMENT OF TRAIL LINKAGES INCLUDING TIES TO OTHER TRAILS. (40 POINTS)
- HOW THE PROJECT ALIGNS WITH THE IOWA BICYCLE AND PEDESTRIAN LONG RANGE PLAN AND ANY APPLICABLE ADOPTED REGIONAL, COUNTY, OR MUNICIPAL TRAIL PLAN. (20 POINTS)
- THE CURRENT STATUS OF THE PROJECT TOWARD THE REQUIRED NATIONAL ENVIRONMENTAL POLICY ACT (NEPA) COMPLIANCE AND PROJECT READINESS FOR DEVELOPMENT. (20 POINTS)
- THE DEGREE TO WHICH THE PROJECT WILL USE PROGRAM GRANT FUNDS TO LEVERAGE OTHER PUBLIC OR PRIVATE INVESTMENTS. (10 POINTS)
- THE DEGREE OF COMMITMENT TO CONTINUE OPERATION AND MAINTENANCE OF THE PROJECT AFTER THE PROJECT IS COMPLETE (E.G. TRAIL MAINTENANCE FUND, ENDOWMENT, ETC.) (10 POINTS)

COVID-19 RELIEF RECREATIONAL TRAILS PROGRAM



- ALL APPLICATIONS MUST BE EMAILED TO SCOTT.FLAGG@IOWADOT.US BEFORE 5:00 PM CST ON MAY 17, 2021. NO HARDCOPIES.
- APPLICATION MATERIALS ARE AVAILABLE ON THE PROGRAM WEBSITE AT:
[HTTPS://IOWADOT.GOV/SYSTEMS PLANNING/GRANT-PROGRAMS/-FEDERAL-AND-STATE-RECREATIONAL-TRAILS](https://iowadot.gov/systems_planning/grant-programs/-federal-and-state-recreational-trails)
- REVIEW THE GUIDANCE DOCUMENT BEFORE STARTING THE APPLICATION
- FUNDING DECISIONS ARE ANTICIPATED BY AUGUST 15TH.



COMPLETE STREETS POLICY 2020 FISCAL IMPACT

CSP SECTION 4.2

THE IOWA DOT SHALL REVIEW THE FISCAL IMPACT OF THIS POLICY UPON THE COMPLETION OF **ONE FULL PROGRAMMING AND PROJECT LETTING CYCLE** FOLLOWING THE EFFECTIVE DATE IDENTIFIED IN SECTION 4.1, AND **BIENNIALLY** THEREAFTER.

BICYCLE COMPATIBILITY RATING



- THE BICYCLE COMPATIBILITY RATING (BCR) WAS DESIGNED TO BE SENSITIVE TO THE CONDITIONS OF LOW AND MODERATE VOLUME RURAL ROADWAYS.
- THE BCR USES FACTORS INCLUDING **AVERAGE DAILY TRAFFIC VOLUME, ROADWAY WIDTH, PERCENT SOLID YELLOW CENTER LINE (SIGHT DISTANCE), AND PERCENT TRUCK TRAFFIC.**
- BASED ON THIS COMBINATION OF FACTORS, ROADWAY SEGMENTS ARE RATED **“GOOD,” “MODERATE,” OR “POOR.”**

NEEDS TEST PASSED

	3 or more	2 out of 5	1 out of 5	0 out of 5
Poor	20%	15%	10%	0%
Moderate	15%	10%	5%	0%
Good	10%	5%	3%	0%

Figure 5.6: The United States Bicycle Route System National Corridor Plan (June 2018)

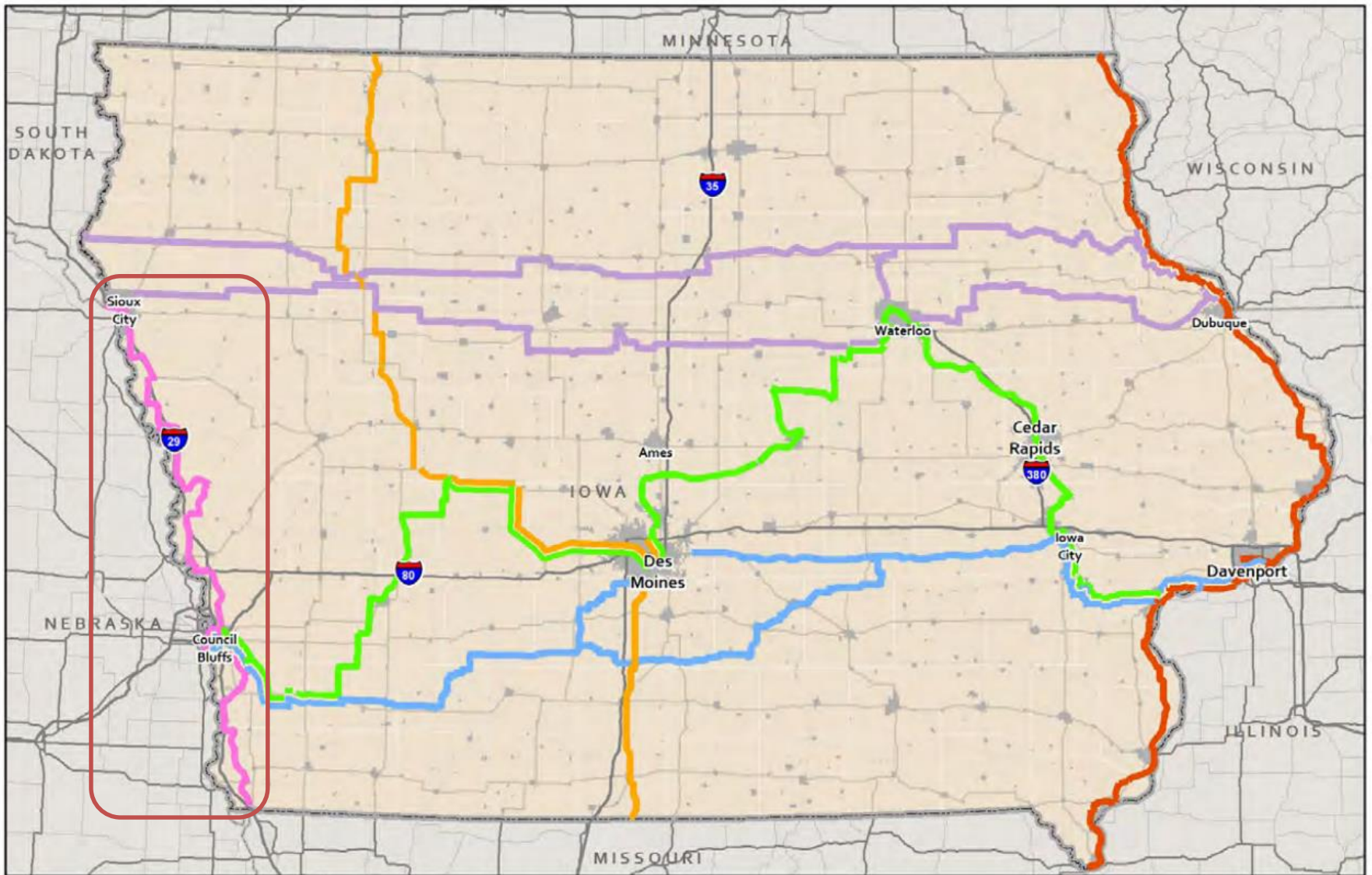


The goal of The United States Bicycle Route System is to connect America through a network of numbered interstate bicycle routes.

NATIONAL CORRIDOR PLAN

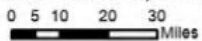
June 2018





Bicycle & Pedestrian Long-Range Plan

Status of National Trail and USBR System



July 3, 2018



- American Discovery Trail
- Mississippi River Trail (USBR 45)
- Lewis & Clark Trail (USBR 55)
- USBR 36
- USBR 40
- USBR 51

All Data Provided by Iowa DOT Unless Noted.

On-Road Bicycle Compatibility ratings were determined based on Iowa DOT's 2012 GIMS data using the Wisconsin Department of Transportation's Rural Bicycle Planning Guide methodology.

ROUNDTABLE ANNOUNCEMENTS AND UPDATES



Open forum

Share updates and information