



# Statewide Transportation Alternatives Set-aside Program

Funding Recommendation

## Statewide Transportation Alternatives Set-Aside Program

- Current version of program in existence since 1991
- Majority of funding is distributed to Iowa's MPOs and RPAs, but \$5 million reserved for statewide projects annually with 20% target for Safe Routes to School projects
- Available to a variety of project sponsors but most applicants are cities and counties

## Eligible Activities

- On-road and off-road non-motorized trail facilities, safe routes for non-drivers, conversion of abandoned rail corridors for trails, preservation/rehabilitation of historic transportation facilities among others
- Federal Recreational Trails Program eligible activities
- Infrastructure-related or non-infrastructure related Safe Routes to School Projects
- Scenic Byways

## Project Evaluation Criteria

Criteria	Points
Statewide or multi-regional impact of the project	25
Connectivity and Completion of Trail Linkages	15
Alignment with Local, Regional, or Statewide Planning Documents	15
Federal-aid Project Development Process, Understanding & Capacity	10
Contribution Toward Safety for All Transportation Modes	10
Enhancement of Statewide Tourism Benefits	10
Leverage of other funding sources	10
Need for the proposed project	10
Addresses high-need areas	10
Improve accessibility	5
Long-term maintenance plan	5
Project readiness	5
<b>MAXIMUM POINTS</b>	<b>130</b>

## Available Funding and Application Summary

### Available Funding:

Total Funding Available	\$9,000,000
Target to Safe Routes to School	\$1,800,000 (20%)
Target for non-Safe Routes to School	\$7,200,000

### Application Summary:

Total number of projects:	11
Total project costs	\$6,250,826
Total amount requested	\$4,704,266

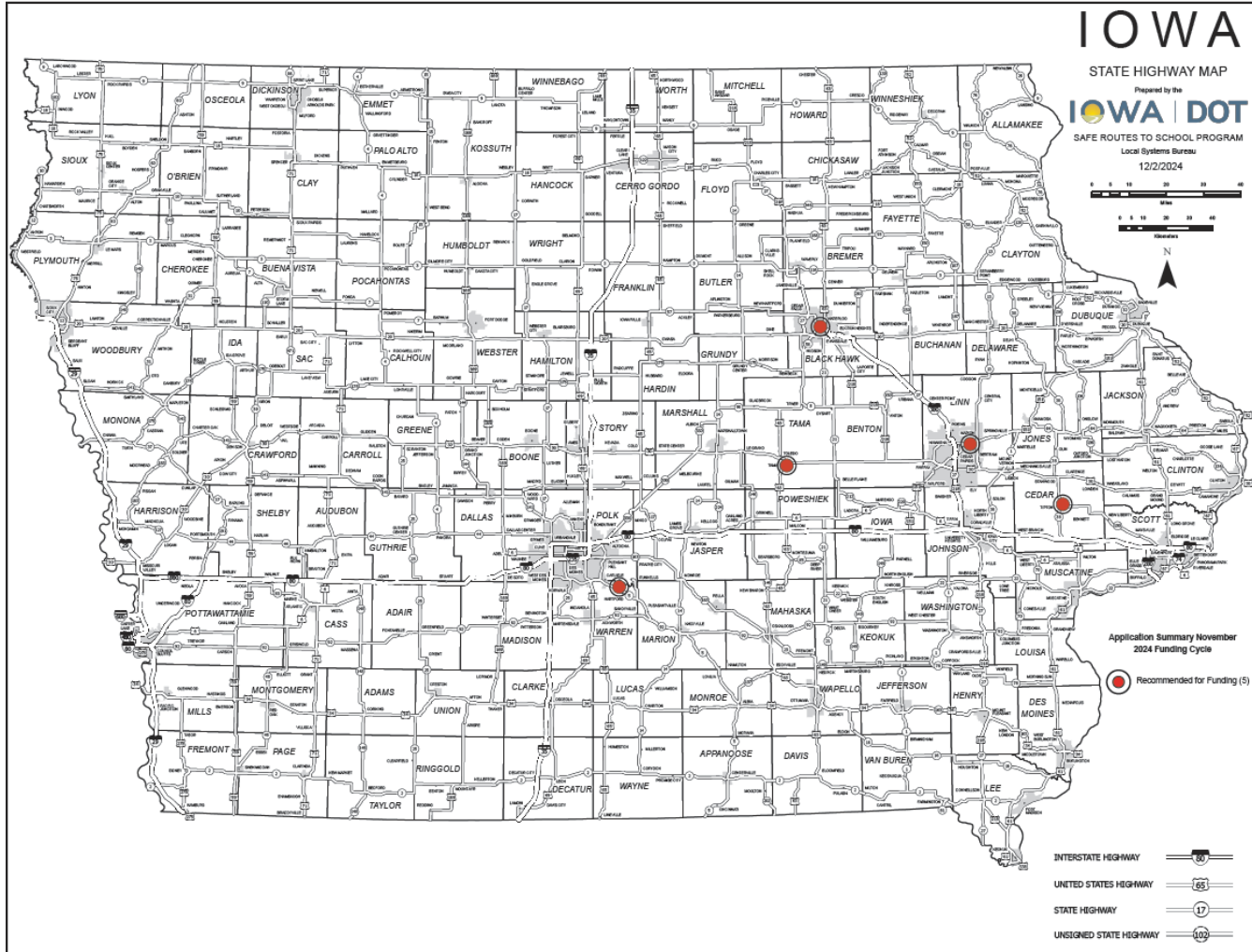
---

# Safe Routes to School Applications Recommended

PROJECT NAME	SPONSOR	SCORE	TOTAL PROJECT COST	REQUESTED AMOUNT (% of Total Project Cost)	RECOMMENDED AMOUNT (% of Total Project Cost)
<u>Vine Street Safe Routes to School Project</u>	Hartford	87	\$916,533	\$733,226 (80%)	\$733,226 (80%)
<u>Tama-Toledo Safe Routes to School Improvements</u>	Tama	85	\$752,856	\$602,284 (80%)	\$602,284 (80%)
<u>Iowa Safe Routes Partnership</u>	Iowa Northland Regional Council of Governments	80	\$354,344	\$283,482 (80%)	\$283,482 (80%)
<u>15th Street Safe Routes to School Sidewalk</u>	Marion	79	\$680,000	\$544,000 (80%)	\$544,000 (80%)
<u>Plum Street Safe Routes to School Project</u>	Tipton	78	\$289,675	\$231,740 (80%)	\$231,740 (80%)



# Safe Routes to School Applications Received

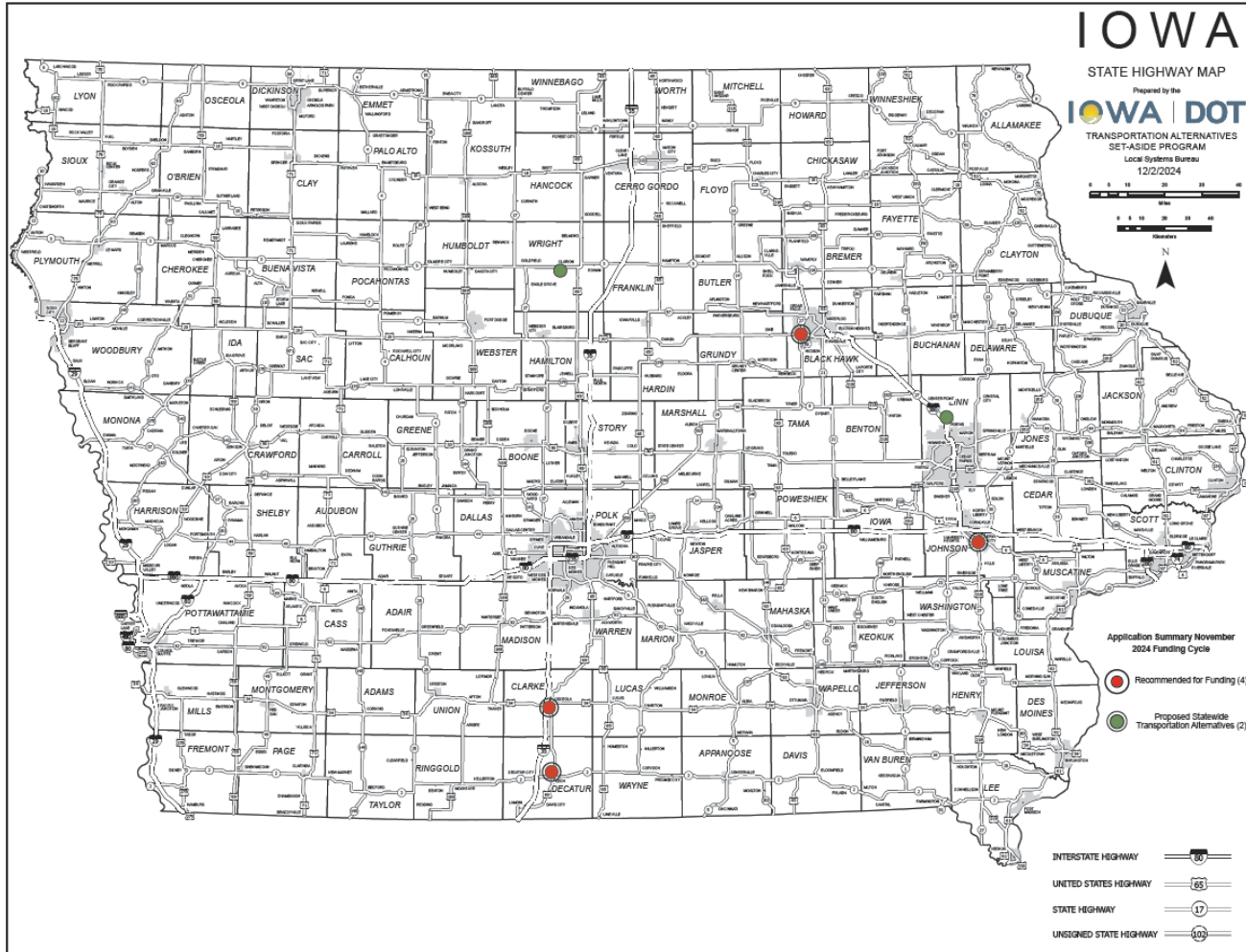


## All Other Applications Recommended

PROJECT NAME	SPONSOR	SCORE	TOTAL PROJECT COST	REQUESTED AMOUNT (% of Total Project Cost)	RECOMMENDED AMOUNT (% of Total Project Cost)
<u>West Clay Street Trail Extension over I-35</u>	Osceola	116	\$930,000	\$740,000 (80%)	\$740,000 (80%)
<u>U.S. 6, Iowa 1, and Riverside Drive Bicycle and Pedestrian Facilities</u>	Iowa City	114	\$675,000	\$540,000 (80%)	\$540,000 (80%)
<u>UNI Integrated Roadside Vegetation Management</u>	University of Northern Iowa Tallgrass Prairie Center	72	\$436,418	\$349,134 (80%)	\$349,134 (80%)
<u>Little River Scenic Pathway Extension Ph 2</u>	Decatur County Conservation Board	66	\$453,000	\$70,000 (15%)	\$70,000 (15%)



# All Other Applications Received



*Thank you!*

---

**Questions?**



[susan.hollenkamp@iowadot.us](mailto:susan.hollenkamp@iowadot.us)

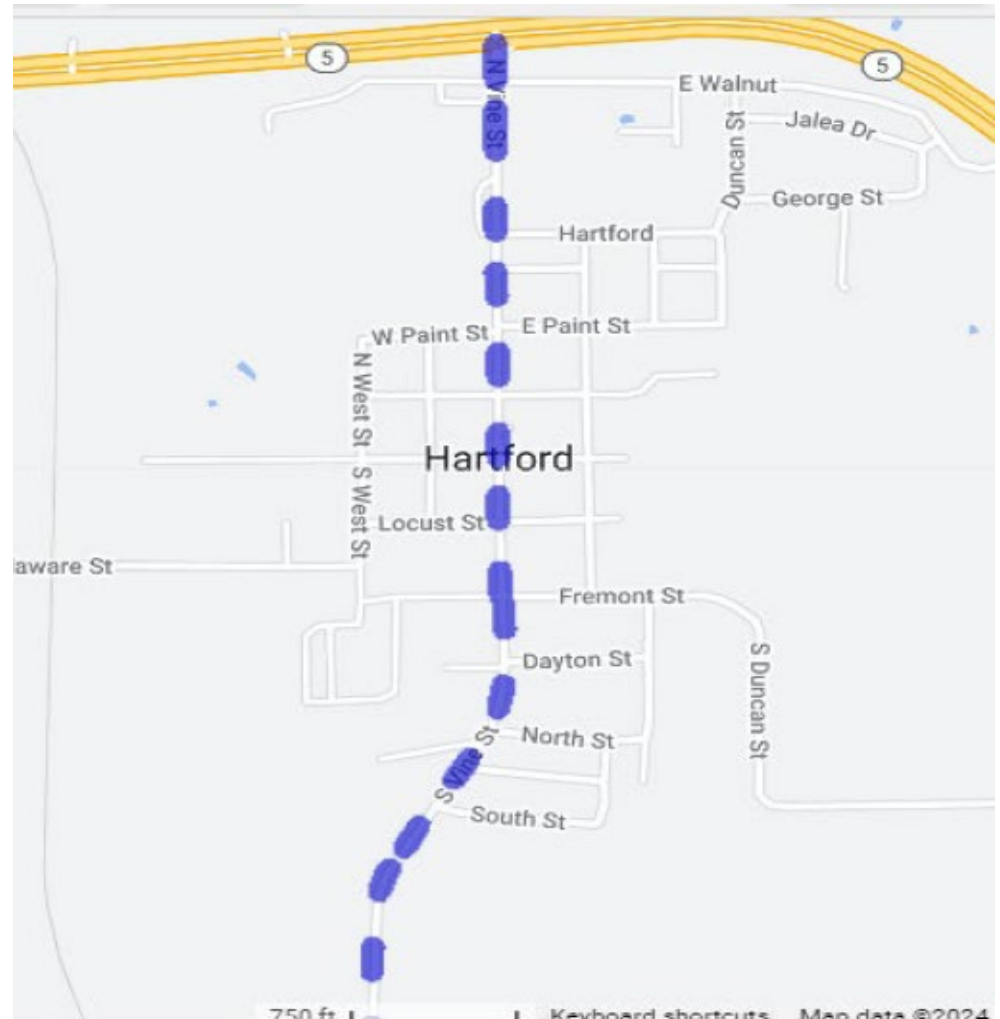


515-239-1810

## Vine Street Safe Routes to School Project (Hartford)

This project will repair and replace 1.3 miles of sidewalk along both sides of North and South Vine Street in Hartford.

**Total Cost: \$916,533**  
**Requested: \$733,226 (80%)**



[Return to List of Applications Recommended](#)

# Tama-Toledo Safe Routes to School Improvements (Tama)

This project will develop a coordinated safe routes to school network for the cities of Tama and Toledo by developing 0.44 miles of trail and 0.46 miles of sidewalk to provide safe routes to school in the two south Tama County school district campuses.

**Total Cost: \$752,856**

**Requested: \$602,284 (80%)**



[Return to List of Applications Recommended](#)

## Iowa Safe Routes Partnership (Iowa Northland Regional Council of Governments)

A comprehensive program that provides support to communities by implementing SRTS initiatives, including pedestrian and bicycle safety education through encouragement activities both inside and outside the classroom.

**Total Cost: \$354,344**

**Requested: \$283,482 (80%)**



[Return to List of Applications Recommended](#)



# 15th Street Safe Routes to School Sidewalk Project (Marion)

The project will widen an existing sidewalk to a 10-foot trail along 15th Street from Marion High School to Vernon Middle School.

**Total Cost: \$680,000**

**Requested: \$544,000 (80%)**



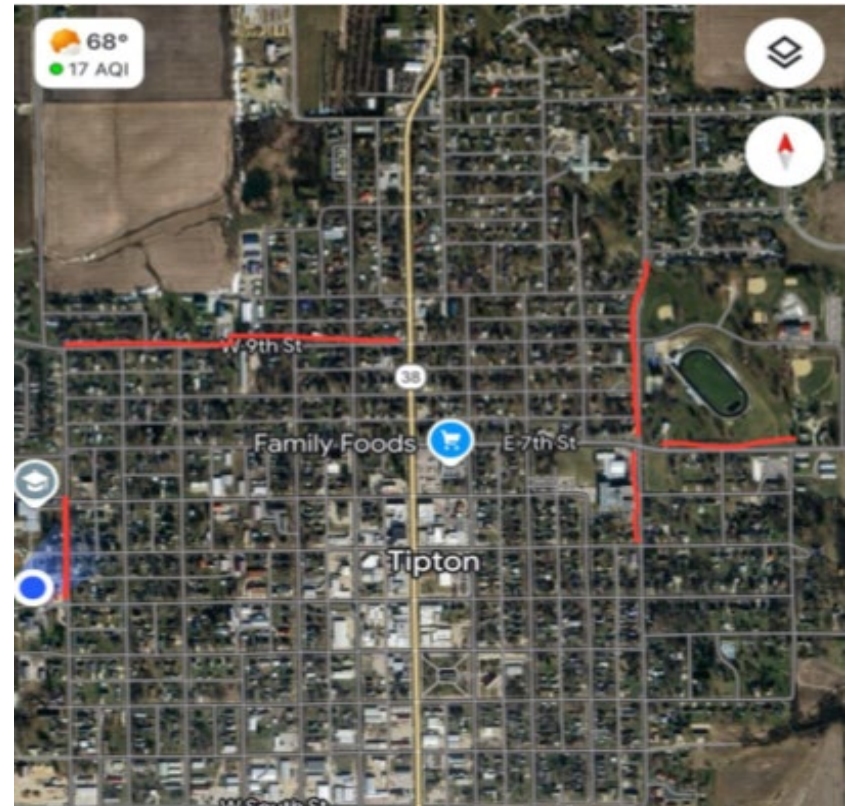
[Return to List of Applications Recommended](#)



# Plum Street Safe Routes to School Project (Tipton)

This project includes 6-foot wide sidewalk on Plum Street from Iowa 130 to E. 10th Street and includes the removal a bottleneck.

**Total Cost: \$289,675**  
**Requested: \$231,740 (80%)**



[Return to List of Applications Recommended](#)

## West Clay Street Trail Extension Over I-35 (Osceola)

This project includes a 0.64 mile trail along on the south side of West Clay Street and the existing interstate bridge.

**Total Cost: \$930,000**  
**Requested: \$740,000 (80%)**



[Return to List of Applications Recommended](#)

## U.S. 6, Iowa 1, and Riverside Drive Bicycle and Pedestrian Facilities (Iowa City)

This project will establish pedestrian and bicycle facilities along the U.S. 6/Iowa 1 corridor from Gilbert Street to Orchard Street and a trail connection to the bridge over the Iowa River.

**Total Cost: \$675,000**  
**Requested: \$540,000 (80%)**



[Return to List of Applications Recommended](#)



## Native Grass & Wildflower Seed for County & City Rights-of-way (UNI Tallgrass Prairie Center)

This project result in native grass & wildflower seed being planted in road rights-of-way across the state consistent with Integrated Roadside Vegetation Management principles.

**Total Cost: \$436,418**

**Requested: \$349,134 (80%)**



[Return to List of Applications Recommended](#)



# List of Applications Not Recommended for Award

PROJECT NAME	SPONSOR	SCORE	TOTAL PROJECT COST	REQUESTED AMOUNT (% of Total Project Cost)	RECOMMENDED AMOUNT (% of Total Project Cost)
Morgan Creek Trail, Cedar River Bridge Plans	Linn County Conservation Board	58	\$550,000	\$440,000 (80%)	\$0
Highway 3 and 4th Street HAWK Signal Replacement	Clarion	44	\$213,000	\$170,400 (80%)	\$0